



s.dewit@utwente.nl

# EpCAM+ and EpCAM- circulating tumor cells in metastatic cancer patients: a multicenter study

Sanne de Wit<sup>1</sup>, M. Manicone<sup>2</sup>, E. Rossi<sup>2,3</sup>, E.K. Trapp<sup>4</sup>, R. Lampignano<sup>6</sup>, M. Ouhlen<sup>7,8</sup>, M. Crespo<sup>10</sup>, L.L Zeune<sup>1</sup>, K.C. Andree<sup>1</sup>, J.F. Swennenhuis<sup>1</sup>, R. Vidotto<sup>2</sup>, R. Zamarchi<sup>2</sup>, M. Alunni-Fabbroni<sup>4</sup>, M. Tzschaschel<sup>5</sup>, B. Rack<sup>4</sup>, H. Neubauer<sup>6</sup>, T. Fehm<sup>6</sup>, E. Colomba<sup>9</sup>, F. Farace<sup>7,8</sup>, P. Flohr<sup>10</sup>, J. De Bono<sup>10,11</sup>, L.W.M.M. Terstappen<sup>1</sup>

<sup>1</sup> Department of Medical Cell BioPhysics, University of Twente, the Netherlands, <sup>2</sup> IOV-IRCCS, Padova, Italy, <sup>3</sup> DiSCOG - University of Padova, Italy, <sup>4</sup> Department of Gynecology and Obstetrics, Ludwig-Maximilian-University, Germany, <sup>5</sup> Department of Gynecology and Obstetrics, Ulm-University, Germany, <sup>6</sup> Department of Obstetrics and Gynecology, Heinrich-Heine-University, Germany, <sup>7</sup> "CTC" Translational Platform, Gustave Roussy, Université Paris-Saclay, France, <sup>8</sup> "Identification of Targets for Cancer Treatment", Université Paris-Saclay, France, <sup>9</sup> Department of Medicine, Gustave Roussy, Université Paris-Saclay, France, <sup>10</sup> Cancer Biomarkers, The Institute of Cancer Research, United Kingdom, <sup>11</sup> Prostate Cancer Targeted Therapy Group, The Institute of Cancer Research, United Kingdom.

Abstract 3787

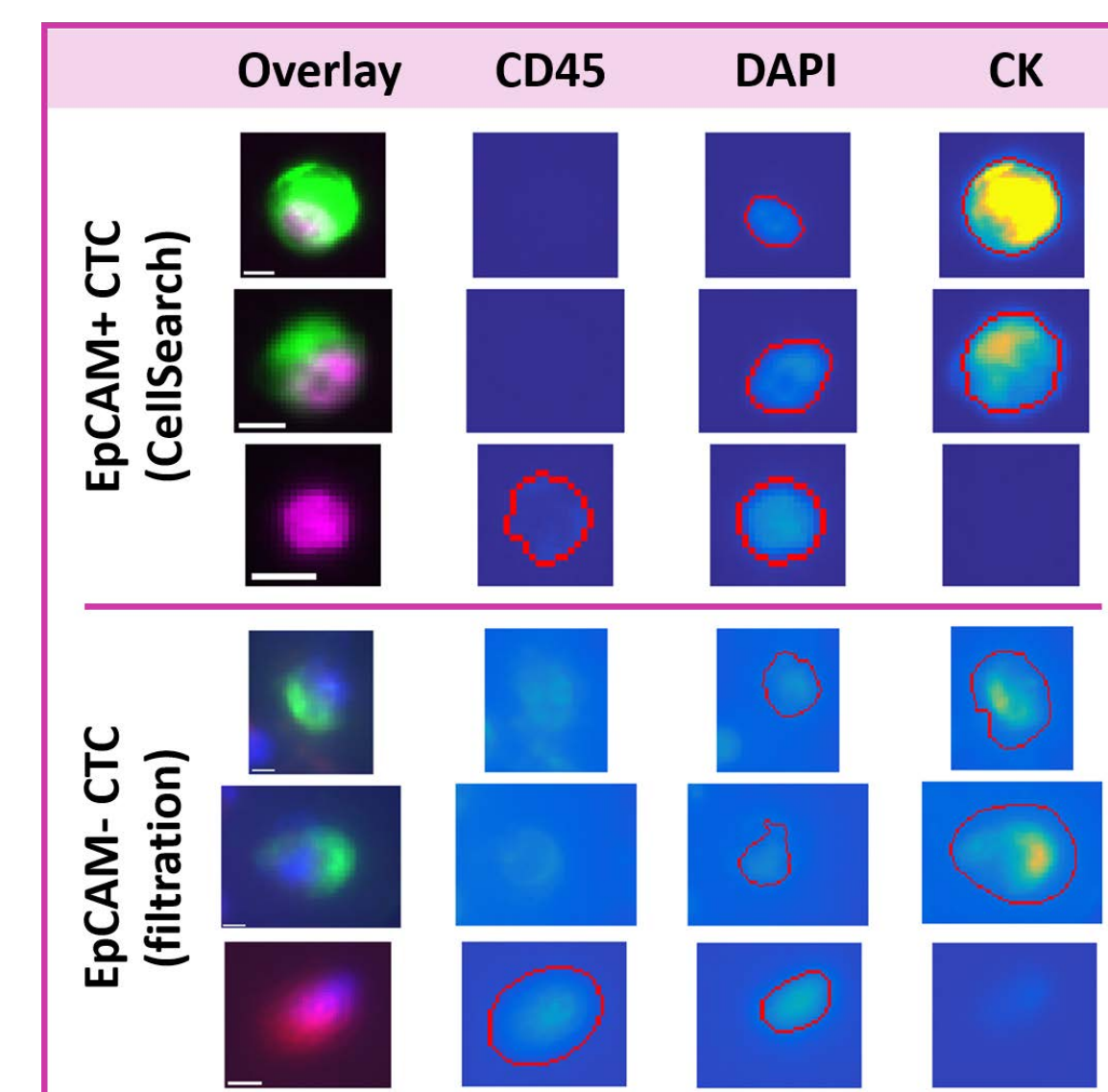
AACR 2017

## Detection of CTC

### CELL LINE RECOVERY

Prostate (PC3) and breast (MDA-MB-231) cancer cell lines were used for spiking in healthy controls at 3 separate occasions and processed at 6 different sites to validate the procedure.

	EpCAM antigens per cell	EpCAM+ CTC recovery	Unaccounted	EpCAM- CTC recovery	Size
PC3	1.0x10 <sup>4</sup>	27%	52%	21%	18 μm
MDA-MB-231	1.5x10 <sup>4</sup>	26%	56%	18%	16 μm



### BREAST CANCER PATIENTS

- Mean EpCAM+ CTC: **13** CTC (n=22, min 0-max 208)
- Mean EpCAM- CTC: **8** CTC (n=22, min 0-max 35)
- EpCAM+ CTC ≥5 = **32%**
- EpCAM- CTC ≥5 = **36%**
- Using EpCAM+ and EpCAM- for ≥5 CTC: detection of patients increases to **64%**

### mBC patients (n=22)

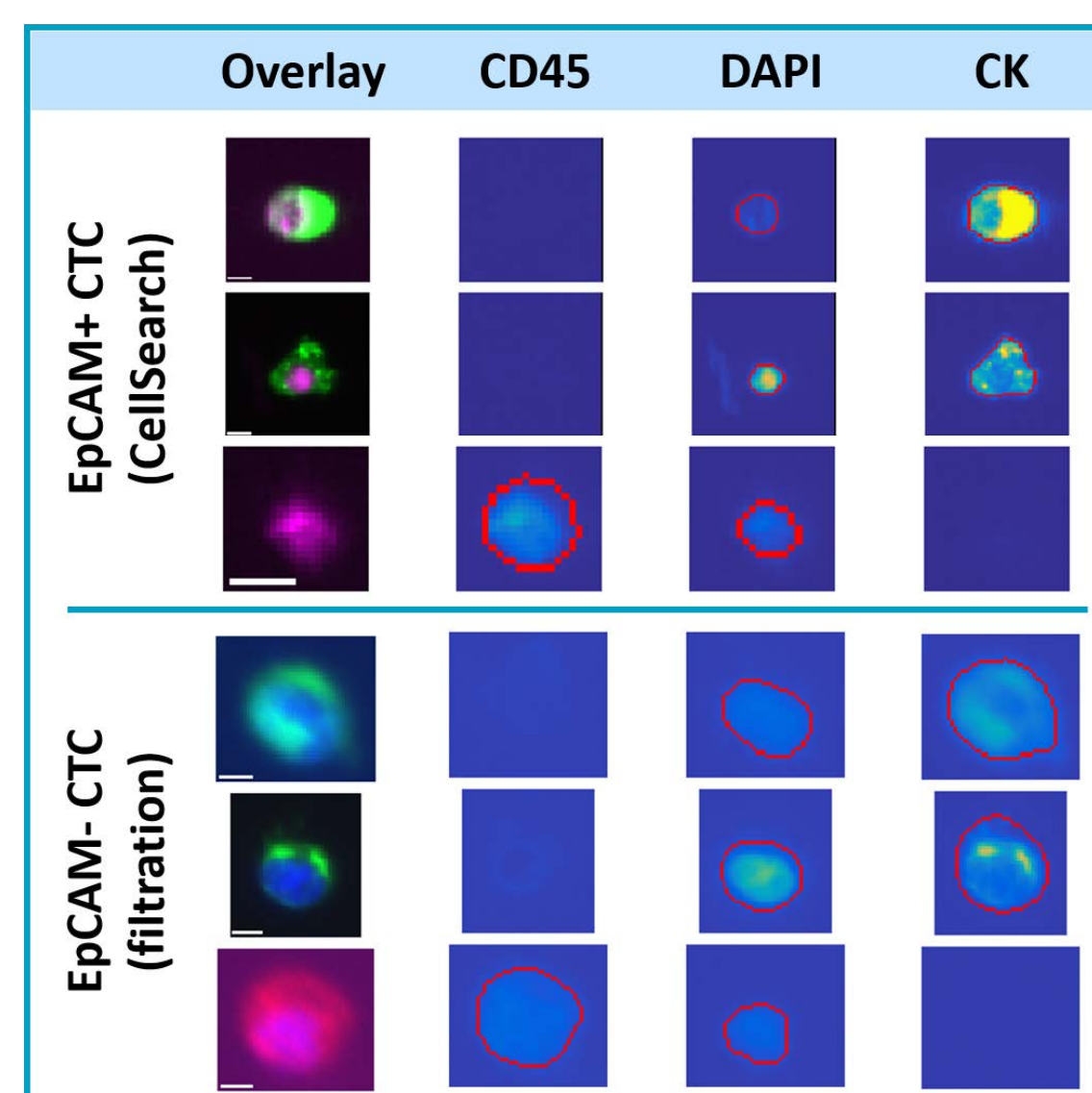
# EpCAM- CTC	0	1-4	≥5
5	14%	14%	9%
1-4	9%	9%	14%
0	18%	5%	9%

### mPC patients (n=64)

# EpCAM- CTC	0	1-4	≥5
5	11%	3%	23%
1-4	8%	8%	11%
0	8%	13%	16%

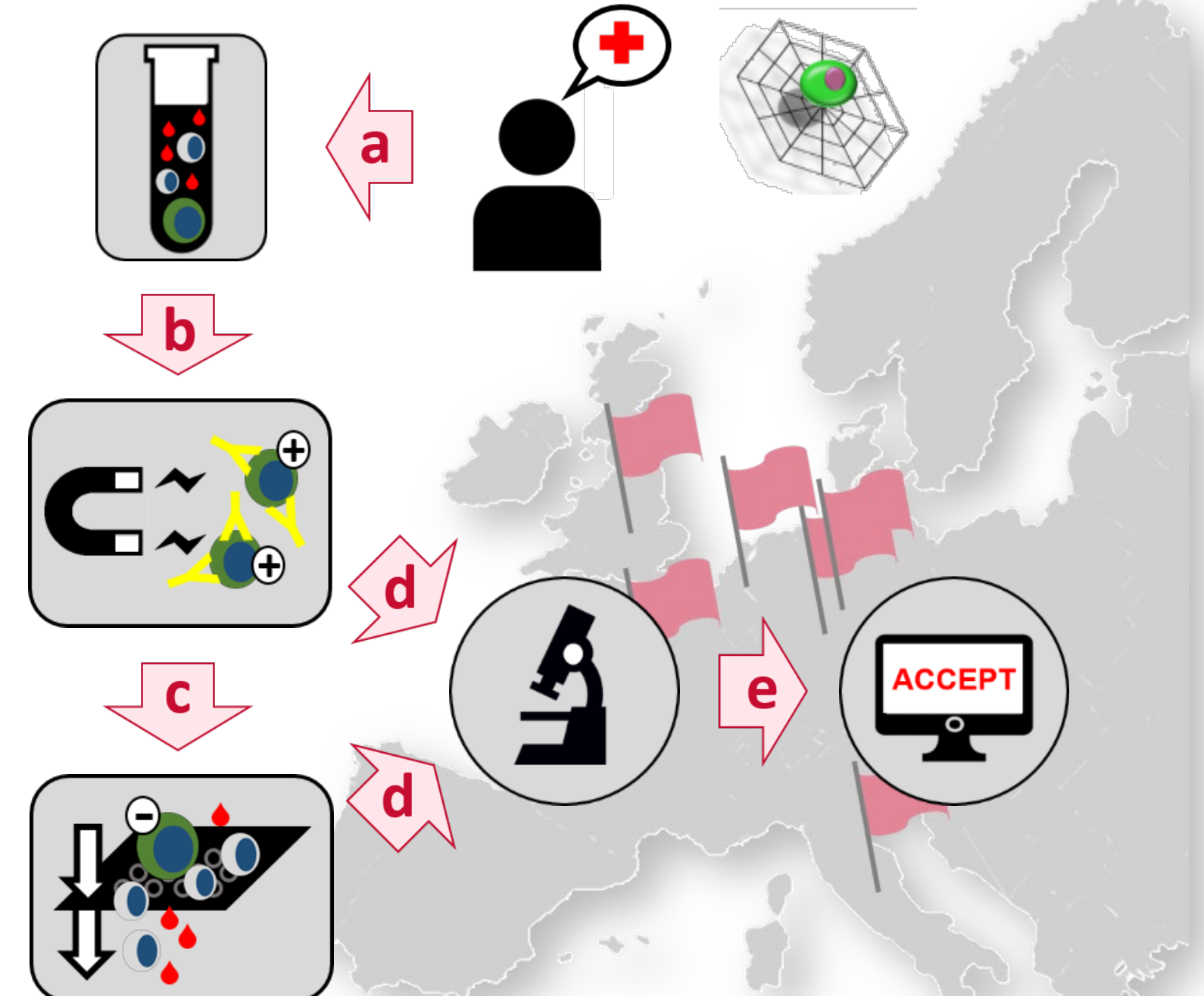
### PROSTATE CANCER PATIENTS

- Mean EpCAM+ CTC: **124** CTC (n=106, min 0-max 3300)
- Mean EpCAM- CTC: **3** CTC (n=93, min 0-max 24)
- EpCAM+ CTC ≥5 = **53%**
- EpCAM- CTC ≥5 = **28%**
- Using EpCAM+ and EpCAM- for ≥5 CTC: detection of patients increases to **70%**



## CTC-Trap

EpCAM+ CTC are strongly associated with poor prognosis for patients. We investigated the presence of EpCAM- CTC in metastatic prostate cancer (mPC) and metastatic breast cancer (mBC) patients and related their presence with overall survival.



Patients from 6 clinical sites in the European CTC-Trap consortium were enrolled (a) in the study for detection of EpCAM+ CTC (by CellSearch) (b) and EpCAM- CTC (by filtration) (c), followed by quantification (d) and review analysis with the program ACCEPT (e).

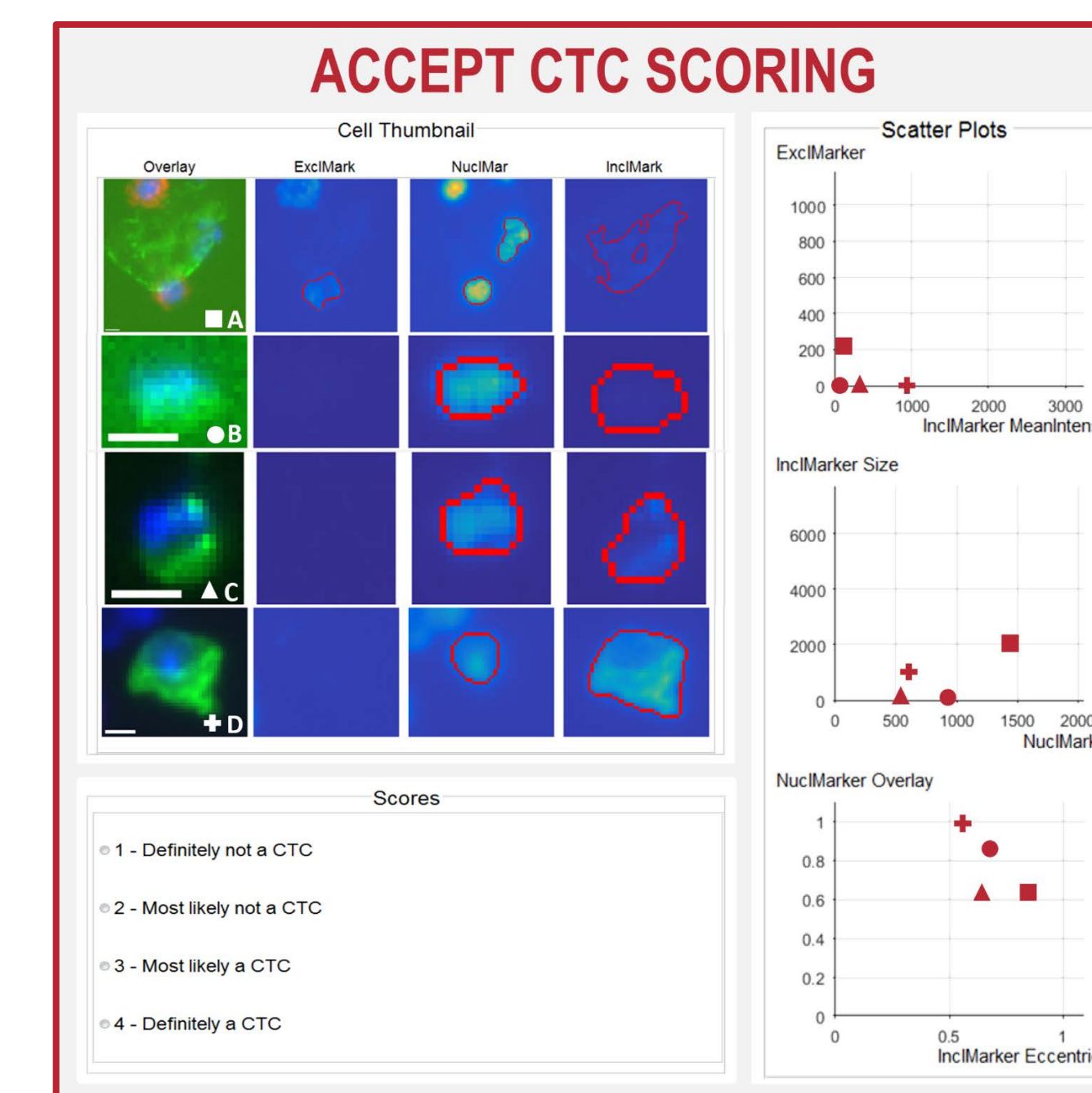
## Conclusion

- In a multicenter study EpCAM+ CTC and EpCAM- CTC were detected in mPC and mBC patients.
- EpCAM+ CTC are associated with poor overall survival in mPC, but EpCAM- CTC are not.
- The clinical value of EpCAM- CTC in mPC remains questionable.

## Evaluation of CTC

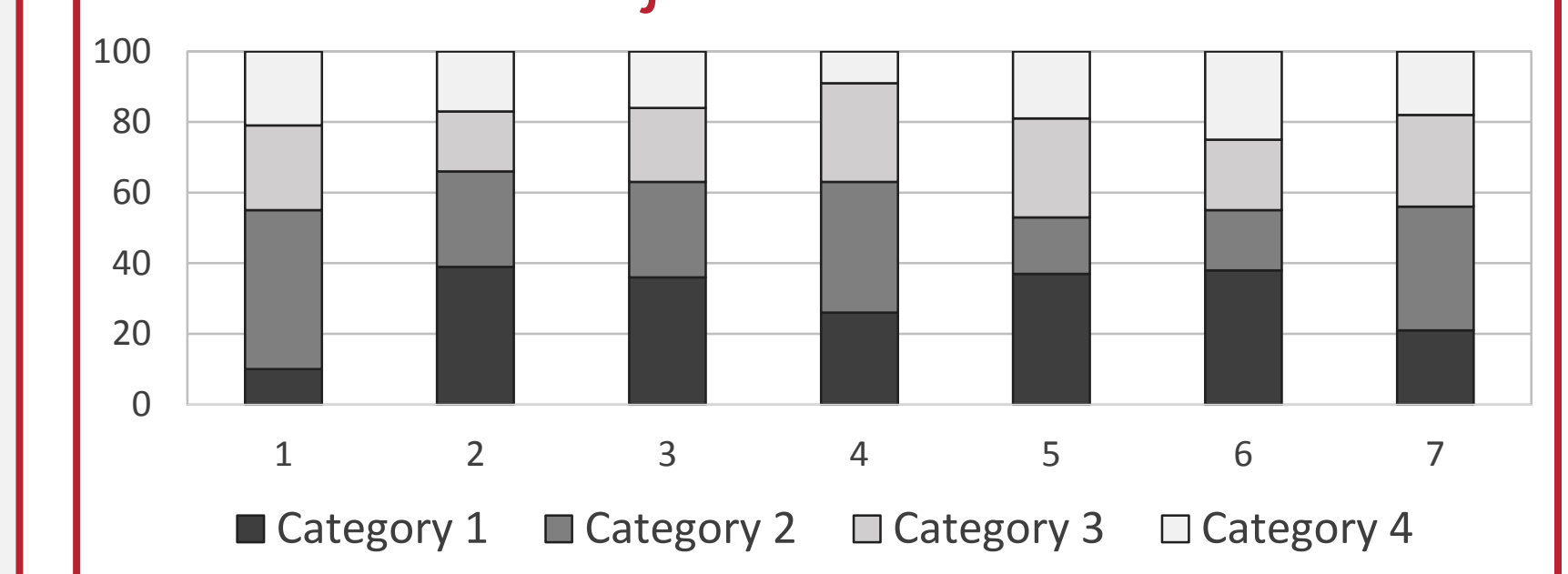
### CTC DEFINITION

- EpCAM+ CTC: DAPI+, cytokeratin+, CD45-, round, >4μm in size, DAPI-CK overlay >50%
- EpCAM- CTC: DAPI+, cytokeratin+, CD45-, DAPI-CK overlay

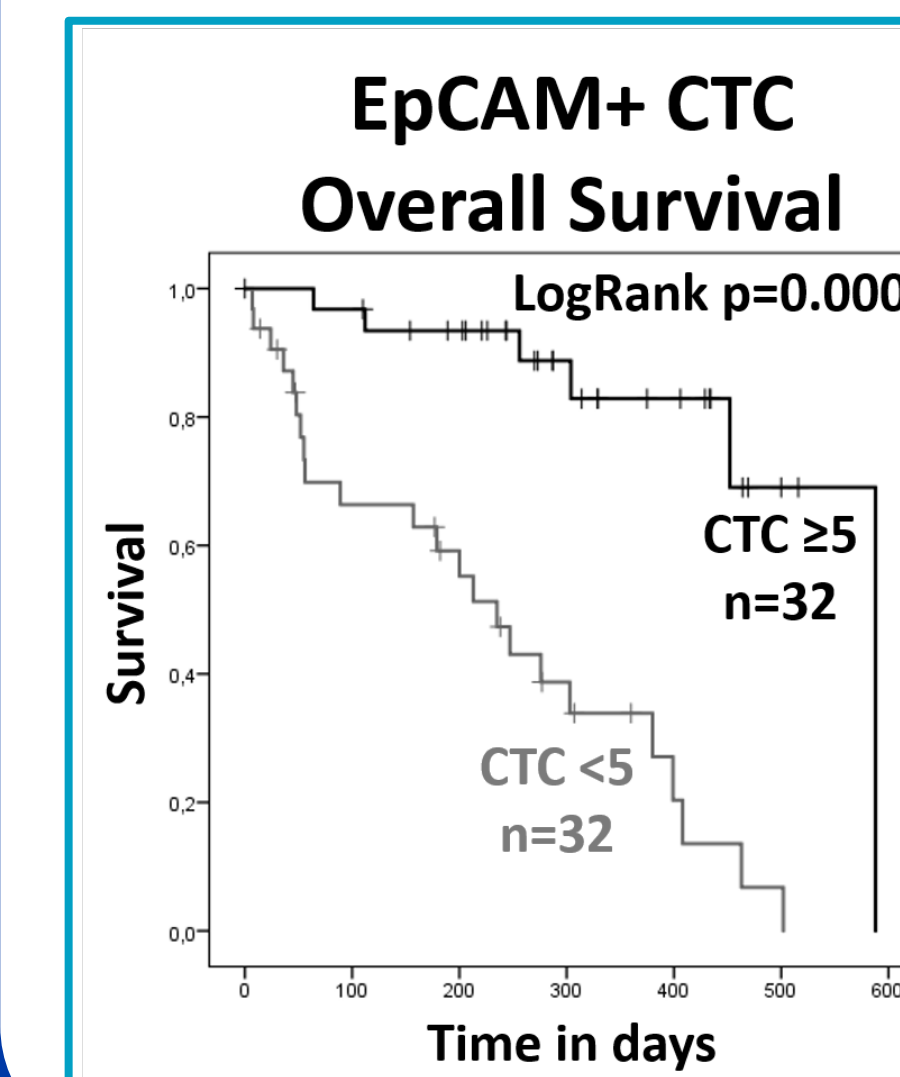


A collection of 100 objects were independently reviewed by 7 operators to determine consensus of scoring EpCAM+ and EpCAM- CTC. For 19 of the objects operators were divided whether the object was a CTC or not. For 5 objects all operators were in complete agreement it definitely being a CTC.

### Score of objects for CTC consensus



## Survival



Clinical outcome was determined for 64 prostate cancer patients.

Presence of EpCAM+ CTC is significantly associated with poor overall survival

Presence of EpCAM- CTC is not associated with poor overall survival

