

PAPER

## Enhancement of the transverse stress tolerance of REBCO Roebel cables by epoxy impregnation

To cite this article: S Otten *et al* 2015 *Supercond. Sci. Technol.* **28** 065014

View the [article online](#) for updates and enhancements.

### Related content

- [Critical current retention of potted and unpotted REBCO Roebel cables under transverse pressure and thermal cycling](#)  
E F Talantsev, R A Badcock, R Matairea *et al.*
- [Roebel cables from REBCO coated conductors: a one-century-old concept for the superconductivity of the future](#)  
Wilfried Goldacker, Francesco Grilli, Enric Pardo *et al.*
- [Bending properties of different REBCO coated conductor tapes and Roebel cables at T = 77 K](#)  
Simon Otten, Anna Kario, Andrea Kling *et al.*

### Recent citations

- [A displacement-energy model of studying the delaminating behavior of multi-layer REBCO coated conductor tapes](#)  
Stephen Ogbonna Mbam *et al*
- [Effect of resin impregnation on the transverse pressure dependence of the critical current in REBCO Roebel cables](#)  
P Gao *et al*
- [A review of commercial high temperature superconducting materials for large magnets: from wires and tapes to cables and conductors](#)  
D Uglietti



**IOP | ebooks™**

Bringing you innovative digital publishing with leading voices to create your essential collection of books in STEM research.

Start exploring the collection - download the first chapter of every title for free.

# Enhancement of the transverse stress tolerance of *REBCO* Roebel cables by epoxy impregnation

S Otten<sup>1,2</sup>, M Dhallé<sup>1</sup>, P Gao<sup>1,3</sup>, W Wessel<sup>1</sup>, A Kario<sup>2</sup>, A Kling<sup>2</sup> and W Goldacker<sup>2</sup>

<sup>1</sup> University of Twente, Energy, Materials and Systems, Drienerlolaan 5, 7522 NB Enschede, The Netherlands

<sup>2</sup> Karlsruhe Institute of Technology, Institute for Technical Physics, Hermann-von-Helmholtz-Platz 1, D-76344 Eggenstein-Leopoldshafen, Germany

<sup>3</sup> Key Lab of Levitation Technologies and Maglev Trains, Ministry of Education, Superconductivity R&D Center, Southwest Jiaotong University, Chengdu, Sichuan 610031, People's Republic of China

E-mail: [simon.otten@kit.edu](mailto:simon.otten@kit.edu)

Received 10 February 2015, revised 24 March 2015

Accepted for publication 24 March 2015

Published 30 April 2015



CrossMark

## Abstract

*REBCO* Roebel cables are considered for application in high-temperature superconducting inserts for accelerator magnets because of their fully transposed geometry, high-engineering current density, and adequate bending tolerance. In these magnets the cables experience Lorentz forces leading to transverse stresses up to 100–150 MPa. Previous reports have shown bare Roebel cables to degrade under such high stresses so that additional reinforcement is required. In this work, two identical Roebel cables are vacuum impregnated with a mixture of epoxy and fused silica in order to improve their tolerance to transverse stress. After impregnation, the critical current of the cables is measured under transverse mechanical loading at  $T = 4.2$  K,  $B_{\perp} = 10.5$  T. A reference cable without impregnation is tested as well. Pressures up to 350 MPa are applied to a short (30 mm) section of each cable. No degradation was observed for pressures up to 250 MPa and 170 MPa in the two impregnated cables. The critical current of the non-impregnated cable, in contrast, started to decrease at stresses as low as 40 MPa.

Keywords: *REBCO* Roebel cable, epoxy impregnation, transverse stress

(Some figures may appear in colour only in the online journal)

## 1. Introduction

The development of future accelerator magnets aims for magnetic fields up to 20 T [1]. At these fields, the current density of  $\text{Nb}_3\text{Sn}$  cables is prohibitively low, and high-temperature superconducting (HTS) insert magnets are needed. The European Organization for Nuclear Research (CERN) has designed [2, 3] and will build an HTS demonstration magnet as part of the collaborative project EuCARD-2 [4]. The aim is to generate a 5 T field standalone and 17 T in a 13 T background field. The design focuses on a so-called 'aligned block' magnet wound with *REBCO* Roebel cables. In an aligned block coil, the wide surface of the *REBCO* tape is aligned parallel to the magnetic field to take advantage of

the  $I_c$  anisotropy. The Lorentz force is thus largely perpendicular to the wide face of the cable. Calculations predict the stress in the demonstrator coil to be up to 110 MPa when operated in a 13 T background field [2]. Therefore, a careful analysis of the effect of such stress levels on Roebel cables must be made.

Transverse pressure tests on *REBCO tapes* show that they typically tolerate transverse stresses of at least 300 MPa [5–8]. In a cable configuration, however, the force is not always homogeneously distributed, leading to local stress concentrations. J Fleiter *et al* showed that the effective stress-bearing section of a Roebel cable made at the Karlsruhe Institute of Technology (KIT) on a flat anvil is only 23% [9]. This means that local peak stresses are at least four times

higher than the average pressure. D Uglietti *et al* pressed Roebel cables with insulated strands to transverse stresses up to 70 MPa [7]. Degradation was observed at pressure levels as low as 10 MPa, and the  $I_c$  value of most strands degraded by more than 20% at 40 MPa. Recently, G Kirby *et al* subjected a stainless steel Roebel dummy cable to 150 MPa transverse pressure, resulting in severe plastic deformation [2]. These results indicate large stress concentrations and confirm the need to reinforce the cable.

A common reinforcement method used with resistive as well as superconducting coils is impregnation with epoxy resin. For REBCO coated conductors (CC), however, epoxy impregnation leads to complications. An impregnated REBCO pancake coil from T Takematsu *et al* showed degradation of the critical current [10]. After visual inspection, a separation of the layers within the individual conductor (delamination) was observed. This type of damage results from a mismatch in thermal expansion between the conductor and the epoxy: When epoxy is cooled down from room temperature to liquid helium temperature ( $T = 4.2$  K), it seeks to contract by 1.33%, while the REBCO tape contracts by only 0.25% [11]. This mismatch leads to thermal stresses that can delaminate the conductor.

Several different methods to reduce such thermal stresses on the conductor have been proposed and were tested successfully. Epoxy resin bonds firmly to metals. Impregnation materials with a lower bonding strength cannot build up as much tensile stress on the surface. T Takematsu *et al* impregnated a REBCO pancake coil with paraffin, which has a negligibly small bonding strength [10]. The critical current of this coil was not affected by the impregnation. M Matsumoto *et al* achieved a field of 24 T with REBCO pancake coils impregnated using this method. However, impregnation with paraffin might not be suitable for Roebel cables because it may lack the mechanical strength needed to reduce stress concentrations. K Mizuno *et al* proposed impregnation of REBCO pancake coils with cyanoacrylate resin [12]. They showed that this resin has a bonding strength significantly lower than epoxy and demonstrated that a coil can be impregnated with this material without degradation of the critical current. Tensile stresses can also be reduced by introducing a weak mechanical barrier between the conductor and the epoxy resin. T Trociewitz *et al* did this by inserting the REBCO CC in a polyester heat-shrink tube before coil winding and impregnation [13]. A layer-wound coil produced with this method generated a record magnetic field of 35.4 T. A similar concept was used by Y Yanagisawa *et al*, who added a layer of polyimide to the REBCO conductor by electrodeposition [14]. This method was also successful in preventing degradation due to impregnation. A different approach is to add filler particles with low thermal expansion to the epoxy resin. C Barth *et al* impregnated a Roebel cable with a 1:1 mixture of epoxy and fused silica without critical current degradation at  $T = 77$  K and in a self-field [11].

In this paper, we report on the transverse strength of short Roebel cables impregnated with such an epoxy–silica mixture. This impregnation method was chosen because of the proven mechanical properties of epoxy and because of its

easy application to the cable structure using vacuum impregnation. Adding polyester or polyimide barriers to the strands or using resins other than epoxy may remain interesting options for future investigation. For comparison, a cable without impregnation was tested as well. The cables are subjected to transverse pressures up to 357 MPa, at a temperature of 4.2 K, and in an applied perpendicular magnetic field of 10.5 T.

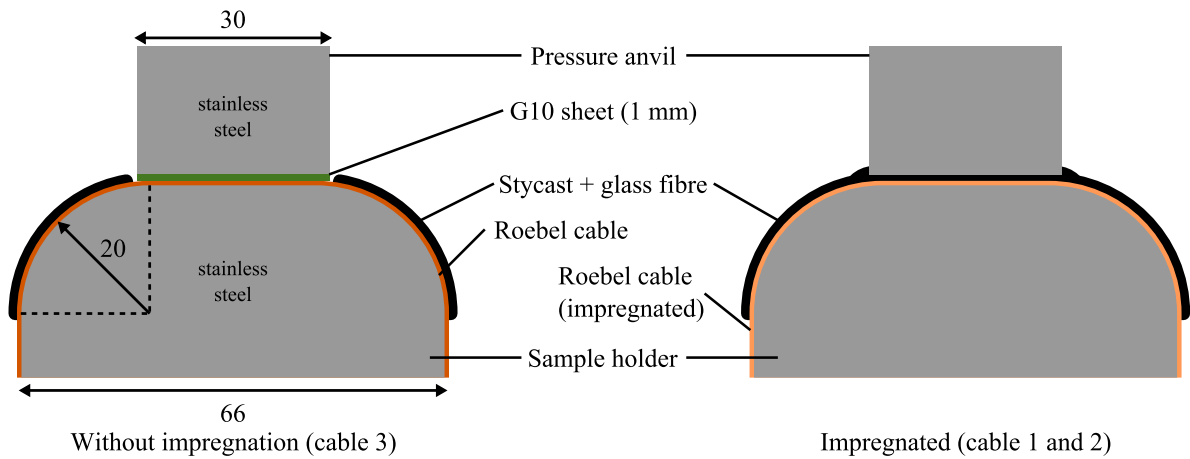
## 2. Experimental details

This section describes the preparation of Roebel cables for the transverse cable press at Twente University. In this facility, forces up to 250 kN can be applied using an electro-mechanical press. The sample current is generated by a 50 kA superconducting transformer. Both transformer and press were built earlier and used in transverse stress tests of low temperature superconducting Rutherford cables. More details about this system can be found in [15].

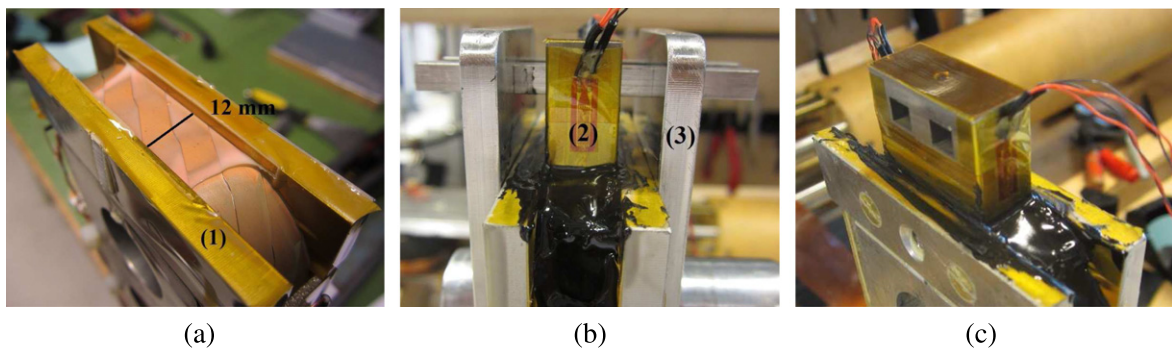
Three identical 75 cm-long, 10-strand cables were prepared from REBCO tape from SuperPower (SCS12050-AP). A 12 mm-wide tape with a 50  $\mu\text{m}$  Hastelloy substrate, 2  $\mu\text{m}$  of silver, and 40  $\mu\text{m}$  of copper stabilization was used. The tape was punched into the meandering Roebel pattern with a transposition length of 126 mm [16]. In this process, the current-carrying width of the tape is reduced from 12 to 5.5 mm. Before cable assembly, the critical current of the separate strands was measured in liquid nitrogen ( $T = 77$  K) and magnetic self-field. The strands had an average  $I_c$  value of  $172 \pm 2$  A. This corresponds to a critical surface current density of 31  $\text{A mm}^{-1}$  width compared to 33  $\text{A mm}^{-1}$  width before punching. The average  $n$ -value was  $29 \pm 1$ .

After assembly, the cable was mounted on a U-shaped sample holder, suitable for measurements inside a solenoid magnet (figure 1). The corners of the sample holder have a radius of 20 mm; the horizontal section in between the bends is 26 mm long. The REBCO coated side of all strands is facing the sample holder, since this side will be soldered to the current leads. The cable is electrically insulated from the stainless steel sample holder with a layer of polyimide tape. A block of Teflon is pushed against the flat ‘bottom’ of the U-shape to create a flat epoxy surface and to prevent epoxy from flowing out during the curing process. Three pairs of voltage taps are soldered to the cable over a length of one transposition length, including the bottom sample section.

Two of three cables (cable 1 and 2) were then vacuum impregnated with a mixture of epoxy and fused silica powder. The epoxy resin Araldite CY5538 with hardener HY5571 was supplied by Huntsman Corporation, and it is mixed with Silbond FW600 EST fused silica powder with a median particle size of 4  $\mu\text{m}$ . The mixing ratio of resin, hardener, and silica powder is 1:1:2 by weight. To remove trapped gas bubbles, the mixture is evacuated to 1–2 mbar for 30 min. Impregnation is done by slowly lowering the sample holder into an epoxy bath at low pressure (3 mbar) and then releasing the vacuum. During impregnation, the epoxy bath and the sample holder are heated to 80  $^\circ\text{C}$  to reduce viscosity. The



**Figure 1.** Cross-sectional view of the experiment for both samples with and without impregnation.



**Figure 2.** Cable 2 on the U-shaped sample holder. The cable is supported against the lateral Lorentz forces on both sides by side plates (1). (a) After impregnation and removal of the Teflon block. (b) The pressure anvil (2) being glued in place with Stycast epoxy. The block is aligned to the sample holder using two positioning plates (3). (c) After curing the Stycast and removal of the positioning plates.

sample is retracted from the bath and the resin is cured at 100 °C for 24 h.

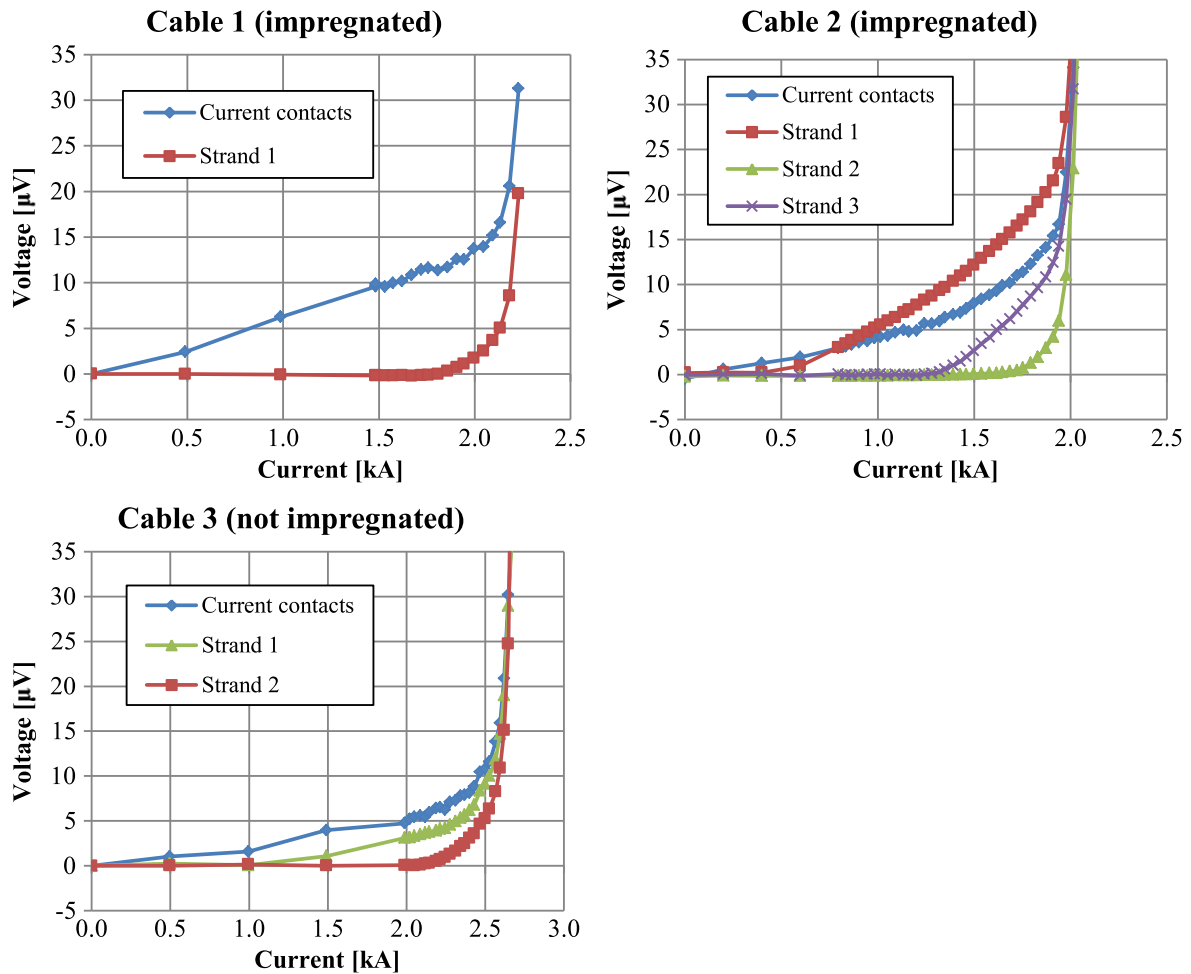
After curing, the Teflon block is removed. An impregnated cable in this state is shown in figure 2(a). Next, two layers of glass fibre ribbon wetted with Stycast 2850FT/23LV epoxy are added to the cable. The 30 mm-long pressure anvil is positioned on top of the glass ribbons. The surface of the anvil is aligned at a distance of 1.5 mm from the sample holder using two positioning plates (figure 2(b)), which are removed when the Stycast has hardened. The cables with the block glued in place are shown in figure 2(c). The anvil is glued for two reasons: to avoid stress concentrations at the ends of the pressed section and to ensure parallelism of the anvil and the sample surface. The layer of Stycast and glass fibre between the cable and the stainless steel anvil is relatively soft, while the anvil is aligned with the sample holder. Both precautions ensure that the force is transferred homogeneously over the entire surface covered by the anvil.

A drawback of this preparation method is the possibility of a bond between the anvil and the plates that prevents sample motion under influence of the lateral Lorentz forces (figure 2(a)). The support plates are fixed to the sample holder and may therefore transmit part of the transverse force during the actual experiment. To minimise this complication, the sides of the pressure anvil and inner surface of the support

plates were covered with Kapton tape, which hardly bonds with the Stycast resin and sticks to the metal plates with a relatively weak silicone adhesive. As a verification that the lateral support plates play a negligible role in the pressure tests, the support plates were made lower for cable 2 (3 mm versus 14 mm above the sample holder) in order to reduce the contact area with the anvil.

Unlike cables 1 and 2, sample 3 was not impregnated, and the pushing block was not glued to it. Instead, a 1-mm-thick sheet of G10 was attached to the side of the anvil in contact with the cable. This sheet compensates for the thinner sample and reduces stress concentrations at the ends of the pressed section, where otherwise the corners of the anvil would directly cut into the cable. This results in a fairer comparison with impregnated cables, where the anvil and the sample were separated by a 1 mm-thick layer of glass fibre with Stycast. Since the cable is not impregnated, it is necessary to reinforce it against Lorentz forces in another way. Outside of the pressed section, along the sides of the U-shape, four layers of glass fibre soaked in Stycast 2850FT epoxy were added. The uncovered section of the cable is supported against Lorentz forces by applying a pressure of 10 MPa before doing any measurements.

Finally, the sample is connected to the NbTi current leads of the transformer by soldering over a length of one



**Figure 3.** Initial  $I$ - $V$  curves of both cables at  $T = 4.2$  K,  $B_{\perp} = 10.5$  T. The voltage was measured over the current contacts and over strands, including the pressed section.

transposition length (126 mm) with  $\text{Sn}_{97}\text{Ag}_3$  solder. A fourth pair of voltage taps is connected to the current contacts.

### 3. Results and discussion

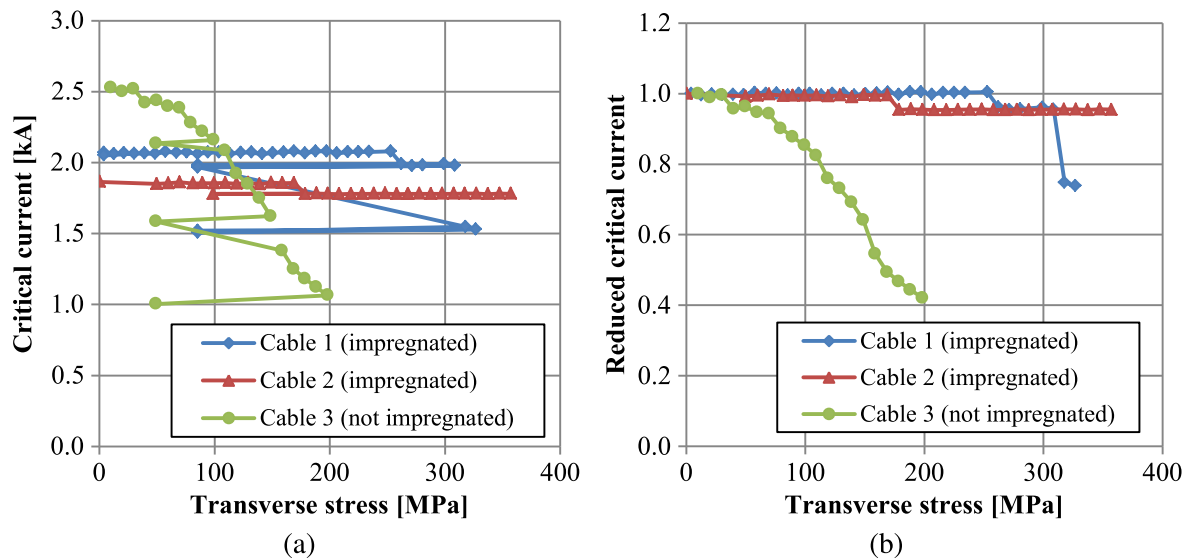
All measurements were done at  $T = 4.2$  K in a perpendicular applied magnetic field  $B_{\perp} = 10.5$  T. The initial  $I$ - $V$  curves for the three cables are shown in figure 3. In cables 1 and 3, voltage measurements on several strands did not yield useful data and are therefore not shown in the figure.

The critical current of a Roebel cable strongly depends on the orientation of the magnetic field. A voltage will therefore first appear in the cable section where the angle between the wide cable surface and the magnetic field is close to  $90^{\circ}$ . As the straight section of the cable is relatively short compared to the bends, this length is less well defined. For determining the critical current, a straight section length of 30 mm is used, corresponding to the length of the anvil. All possible damage due to transverse pressure will occur in this segment. Using such definition and an electric field criterion of  $10^{-4}$  V m $^{-1}$ , the voltage criterion becomes  $3 \mu$ V.

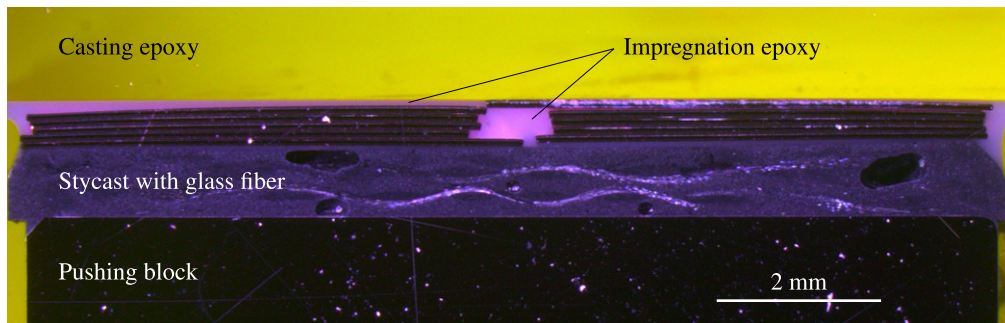
As discussed in [17], current (re)distribution effects in short-sample measurements such as these lead to the appearance of premature voltages. Determining the critical current by interpolation at  $3 \mu$ V would result in scattered values for the different voltage signals, which would not be representative for the critical current of the entire cable. For this reason, the critical current is computed by fitting a voltage-current power law only through measurement points obtained at higher currents at which all signals converge. This method yields consistent critical currents (within 60 A) from the different voltage signals.

For the impregnated cables, the initial critical currents were 2.07 kA (cable 1) and 1.87 kA (cable 2). Cable 3, which was not impregnated, had a markedly higher critical current of 2.53 kA. This may indicate that despite the fused silica filler, epoxy impregnation still causes some damage.

However, the impregnated cables clearly are less sensitive to transverse stress. Figure 4 shows the critical currents as a function of the transverse stress. The stress is calculated by dividing the measured force by the  $12 \times 30$  mm area of the anvil. The critical current of cable 3 started to decrease at stress levels as low as 40 MPa. The impregnated cables on the other hand were not affected for stress levels up to 254 MPa



**Figure 4.** (a) The critical current as a function of transverse stress. The lines connect the data points in chronological order. (b) Critical current normalized to the initial value for each sample.



**Figure 5.** Overview of the cross-section of sample 1. The upper surface was placed on the sample holder. From top to bottom, one can distinguish the casting epoxy, the Roebel cable, the glass-reinforced Stycast layer, and the pressure anvil.

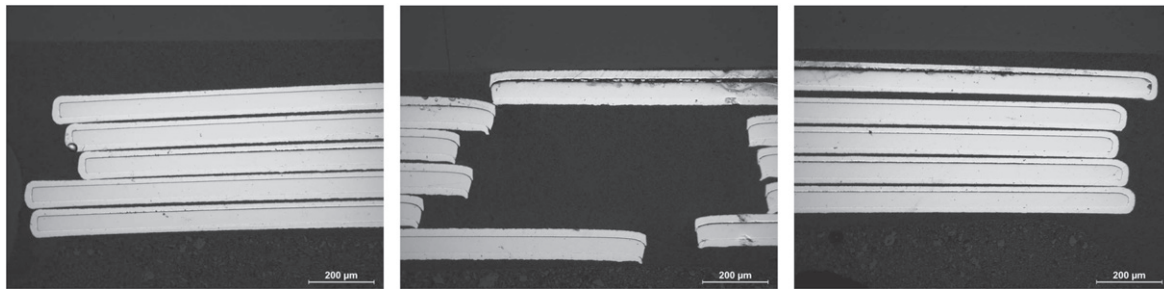
(cable 1) and 169 MPa (cable 2). There is a rather large difference in onset of degradation between the two impregnated samples. Some deviation between different samples is to be expected, since the exact geometry of impregnated cables is hard to control. At increasing stress levels, though, there is no clear difference between the strength of the two samples. This demonstrates that a possible bond to the lateral support plates did not play a large role.

To determine whether the  $I_c$  degradation is reversible, several measurements were repeated after reducing the stress level. The critical current did not recover, so the degradation is indeed irreversible. The total critical current degradation observed during the experiment was 27% at 327 MPa for cable 1, 4.5% at 357 MPa for cable 2, and 60% at 198 MPa for cable 3.

The measurements show that the impregnated cables withstand transverse pressures up to at least 169 MPa. This is a first confirmation that impregnated Roebel cables can withstand stress levels similar to those expected in accelerator magnets. A remaining point of discussion is that the pressed section (30 mm) is shorter than the transposition length (126 mm). In the pressed section, only four out of the ten strands have a cross-over from one side of the cable to the

other, which is the location where stress concentrations are expected to occur [7, 9]. As a result, the measured degradation might be lower than in the case of a longer pressure anvil. Arguably, however, this will not affect the point of onset of the degradation, as it does not influence the magnitude of the stress concentrations at each cross-over.

A cross-section was made of cable 1 to check the impregnation quality and the alignment of the anvil with the sample holder and to inspect the cable for visible damage. The cable and the anvil to which it was glued were cast in epoxy. Material was then removed by sanding until the pressed section was visible. The surface was polished and examined under an optical microscope. Figure 5 shows an overview of such cross-section. The impregnation was successful: the silica-epoxy mixture filled the structure throughout and there are no bubbles visible. In the Stycast layer there are some empty spaces because no vacuum was used. The thickness of the whole cable–Stycast structure is close to 1.45 mm over the entire width. Including the 50  $\mu\text{m}$  Kapton insulation on the sample holder, the distance between the sample holder and pressure anvil was 1.50 mm, as designed. Note that the impregnated cable by itself is thicker on the left than on the right, presumably because the Teflon block was



**Figure 6.** Close-ups of the left end, the central hole, and the right end. Delamination is visible in the upper-right tape. The REBCO layers are on the top side of each tape.

not exactly straight during impregnation. The difference in height is corrected for by glueing the pressure anvil using the positioning plates. The only visible damage is delamination of the tape closest to the sample holder, clearly visible in figure 6. However, it is unclear whether this delamination is a result of thermal stresses or it occurred when the cable was removed from the sample holder, since for this, some tensile force was needed.

A marked increase was observed in the transverse stress tolerance of the Roebel cables after impregnation, constituting an important first step in demonstrating their use in accelerator magnets. In these experiments pressure was applied over relatively short lengths of just two impregnated samples, resulting in somewhat different stress–critical current characteristics. Within the EuCARD-2 collaboration, a larger number of samples with different layout, tape material, and impregnation method will be tested to determine the factors that influence transverse stress tolerance in more detail. Additionally, experiments with longer sample lengths are planned in a facility such as FRESCA [9, 18] to reduce the effect of local variations in the geometry. Also, possible effects of cyclic loading, closely mimicking the mechanical conditions in repeatedly ramped magnet windings, remain to be addressed.

#### 4. Conclusion

Two REBCO Roebel cables (cable 1 and 2) were vacuum impregnated with a mixture of epoxy resin and fused silica powder. The critical current of the impregnated cables, as well as a reference cable that was not impregnated (cable 3), was measured as a function of transverse pressure at  $T = 4.2$  K,  $B_{\perp} = 10.5$  T. The initial critical current was 2.07 kA for cable 1, 1.87 kA for cable 2, and 2.54 kA for cable 3. The  $I_c$  reduction of the impregnated samples compared to the cable that was not impregnated may indicate damage due to impregnation. Proper impregnation methods and materials for REBCO Roebel cables therefore remain issues that need further work. Pressure levels up to 357 MPa were applied over a length of 30 mm. No degradation was observed for pressures up to 253 MPa for cable 1 and up to 169 MPa for cable 2. In contrast, the critical current of cable 3 already started to decrease at stress levels as low as 40 MPa. These

results are a first confirmation that impregnated Roebel cables can withstand transverse pressures well above the 110 MPa expected in accelerator magnets.

#### Acknowledgments

We would like to thank Huntsman Corporation and Dr H Wilbers in particular for supplying the epoxy resin. We thank Quarzwerke for supplying the fused silica. Discussions with Dr G Kirby and Dr L Bottura from CERN are gratefully acknowledged. The work is part of EuCARD-2, partly funded by the European Commission, GA 312453.

#### References

- [1] Rossi L *et al* 2015 *IEEE Trans. Appl. Supercond.* **25** 1–7
- [2] Kirby G *et al* 2014 *IEEE Trans. Appl. Supercond.* **25** 4000805
- [3] van Nugteren J, Kirby G, de Rijk G, Rossi L, ten Kate H and Dhallé M 2014 *IEEE Trans. Appl. Supercond.* **25** 4000705
- [4] CERN 2014 EuCARD-2: Enhanced European Coordination for Accelerator Research & Development <http://eucard2.web.cern.ch/>
- [5] Cheggour N, Ekin J, Thieme C and Xie Y 2007 *IEEE Trans. Appl. Supercond.* **17** 3063–6
- [6] Takao T, Koizuka S, Oi K, Ishiyama A, Kato J, Machi T, Nakao K and Shiohara Y 2007 *IEEE Trans. Appl. Supercond.* **17** 3517–9 ISSN 1051-8223
- [7] Uglietti D, Wesche R and Bruzzone P 2013 *Supercond. Sci. Technol.* **26** 074002
- [8] Chiesa L, Allen N and Takayasu M 2014 *IEEE Trans. Appl. Supercond.* **24** 1–5 ISSN 1051-8223
- [9] Fleiter J, Ballarino A, Bottura L and Tixador P 2013 *Supercond. Sci. Technol.* **26** 065014
- [10] Takematsu T, Hu R, Takao T, Yanagisawa Y, Nakagome H, Uglietti D, Kiyoshi T, Takahashi M and Maeda H 2010 *Physica C* **470** 674–7
- [11] Barth C, Bagrets N, Weiss K P, Bayer C M and Bast T 2013 *Supercond. Sci. Technol.* **26** 055007
- [12] Mizuno K, Ogata M and Nagashima K 2013 *Q. Rep. RTRI* **54** 46–51
- [13] Trociewitz U P, Dalban-Canassy M, Hannion M, Hilton D K, Jaroszynski J, Noyes P, Viouchkov Y, Weijers H W and Larbalestier D C 2011 *Appl. Phys. Lett.* **99** 202506
- [14] Yanagisawa Y, Sato K, Piao R, Nakagome H, Takematsu T, Takao T, Kamibayashi H, Takahashi M and Maeda H 2012 *Physica C* **476** 19–22
- [15] Boschman H, Verweij A, Wessel S, ten Kate H and van de Klundert L J M 1991 *IEEE Trans. Magn.* **27** 1831–4

- [16] Goldacker W, Grilli F, Pardo E, Kario A, Schlachter S I and Vojenčiak M 2014 *Supercond. Sci. Technol.* **27** 093001
- [17] Verweij A 1997 *Current redistribution in the cables of LHC magnets Tech. Rep.*CERN LHC project note (<http://cern-verweij.web.cern.ch/CERN-Verweij/Papers/LHC-project-note-1997-90.pdf>)
- [18] Verweij A and Denarie C 2006 Superconducting transformer and regulation circuit for the CERN cable test facility *J. Phys.: Conf. Series* **43** 833