

Fig. 6. Visual representation of the deviations [%] between the static meters (SM) and reference when the setup is powered using the ideal power supply with a standardized mains impedance, for the ten different levels of the water pumps capacity

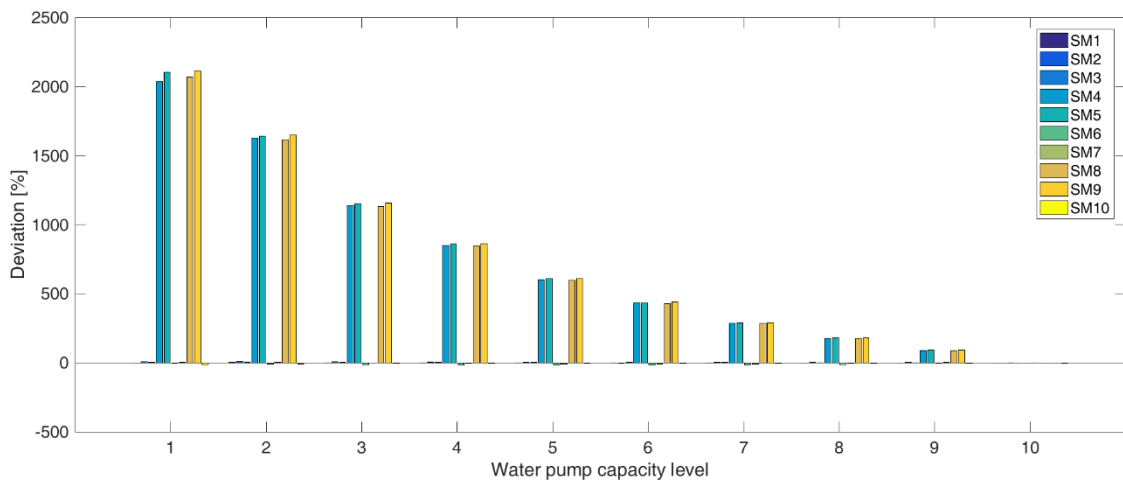


Fig. 7. Visual representation of the deviations [%] between the static meters (SM) and reference when the setup is powered using the ideal power supply with a low impedance, for the ten different levels of the water pumps capacity

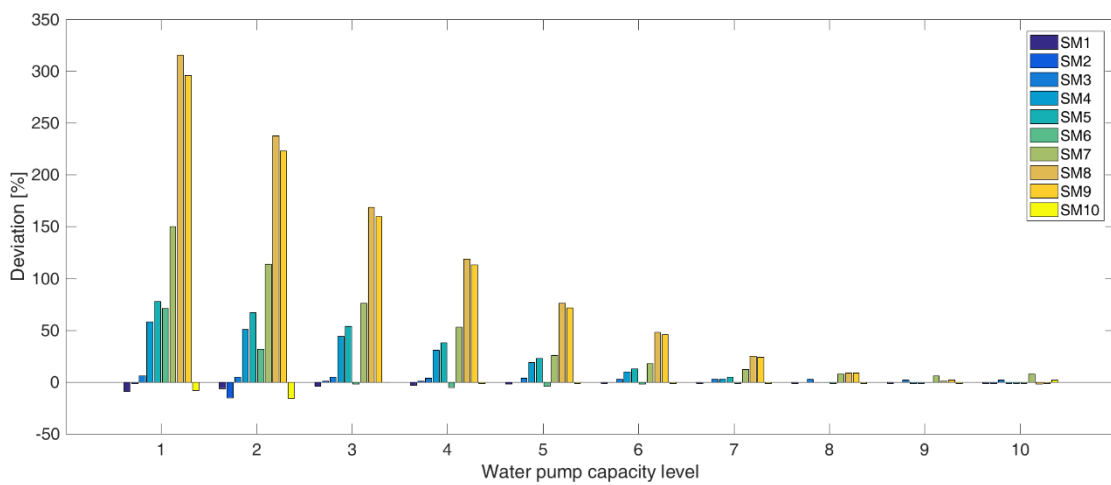


Fig. 8. Visual representation of the deviations [%] between the static meters (SM) and reference when the setup is powered using the ideal power supply with a high impedance, for the ten different levels of the water pumps capacity