



# Drivers of maize yield variability at household level in Northern Ghana and Malawi

Stella Gachoki and Francis Muthoni

International Institute of Tropical Agriculture (IITA), Arusha, Tanzania

## ABSTRACT

Maize is a staple food, but productivity has stagnated due to limited access to advanced farming methods and knowledge. To promote sustainable agriculture, understanding the factors affecting maize yield at the farm level is crucial. This study used panel data on maize yield and agronomic practices in Northern Ghana and Malawi from 2014 to 2020. Satellite-based environmental variables were extracted at household locations, and Random Forest modeling was used to identify factors influencing maize yield variability. The models performance was sub-par with low  $R^2$  values ( $\sim 0.1$  and  $\sim 0.24$  for Northern Ghana and Malawi). Fertilizer and precipitation were the most important factors explaining maize yield variability. Spatial maps showed that Malawi's maize yield can increase with more fertilizer, but rainfall is essential. In Northern Ghana, relying solely on fertilizer may not be enough to boost maize production.

## KEY POLICY HIGHLIGHTS

- Survey data on maize is limited in making accurate yield predictions.
- Fertilizer use can increase maize yield in both Northern Ghana and Malawi.
- Fertilizer use intervention strategies should be region-specific.
- The efficiency of fertilizer use is dependent on adequate rainfall availability.

## ARTICLE HISTORY

Received 9 March 2023

Accepted 23 June 2023

## KEYWORDS

Satellite data; machine learning; sustainable agriculture; yield predictions

## 1. Introduction

Increased agricultural productivity is critical for Sub-Saharan Africa's (SSA) economic growth, poverty alleviation, and improved nutrition for the region's growing population. Maize (*Zea mays L*) is the second most cultivated and staple crop among SSA families, and it is primarily grown by small-scale farmers (Oluoch et al. 2022). Maize yield variance in SSA is influenced by agronomic, biophysical, and socio-economic factors such as variety type, soil fertility, fertilizer application, intercropping, crop rotation, irrigation, farm labour allocation, minimum tillage, input costs, and climatic shifts, among others

**CONTACT** Stella Gachoki  [gstellamuthoni@gmail.com](mailto:gstellamuthoni@gmail.com)

© 2023 The Author(s). Published by Informa UK Limited, trading as Taylor & Francis Group

This is an Open Access article distributed under the terms of the Creative Commons Attribution License (<http://creativecommons.org/licenses/by/4.0/>), which permits unrestricted use, distribution, and reproduction in any medium, provided the original work is properly cited. The terms on which this article has been published allow the posting of the Accepted Manuscript in a repository by the author(s) or with their consent.

(Danquah et al. 2020). However, the effect of these factors at the field level is lacking in most SSA countries because maize yield data is typically aggregated to larger administrative units, which averages out salient features of spatial and temporal variability in yield data (Vergopolan et al. 2021). For example, even in farms with similar environmental conditions, a farmer's choice of maize cultivar, fertilizer, or pesticides can result in inter-farm yield variability (Muthoni 2021). Therefore, characterizing the drivers of crop production at the farm level is crucial for enabling evidence-based scaling out of sustainable agronomic methods that boost maize productivity.

Globally, machine learning algorithms such as Random Forest (RF) have proven to be more accurate in predicting and characterizing crop yield drivers because they can handle large amounts of data and decode complex non-linear relationships between the response variable and the predictor variables (Delerce et al. 2016). For example, Lohitha Reddy and Siva Kumar (2023) employed three different machine learning techniques (decision tree classifier, random forest classifier, and gradient boosting) to forecast crop yields using weather and soil properties as predictor variables. Their study revealed that the random forest classifier outperformed other algorithms in accurately predicting yield. Cai et al. (2019) found that ML methods outperformed than Ordinary Least Square regression when predicting wheat yield in Australia and also reported that combining climatic and vegetation indices data improved prediction of wheat yield. Additionally, other studies have utilized RF machine learning techniques to predict crop yield with high precision, such as Charoen-Ung and Mittrapiyanuruk (2019) predicted sugarcane yield using RF and forward feature selection, Jeong et al. (2016) forecasted the yields for maize, wheat, and potato tubers, Everingham et al. (2016) predicted sugarcane yield in Tully, Australia, and Ahmad et al. (2018) who predicted maize yield in Pakistan.

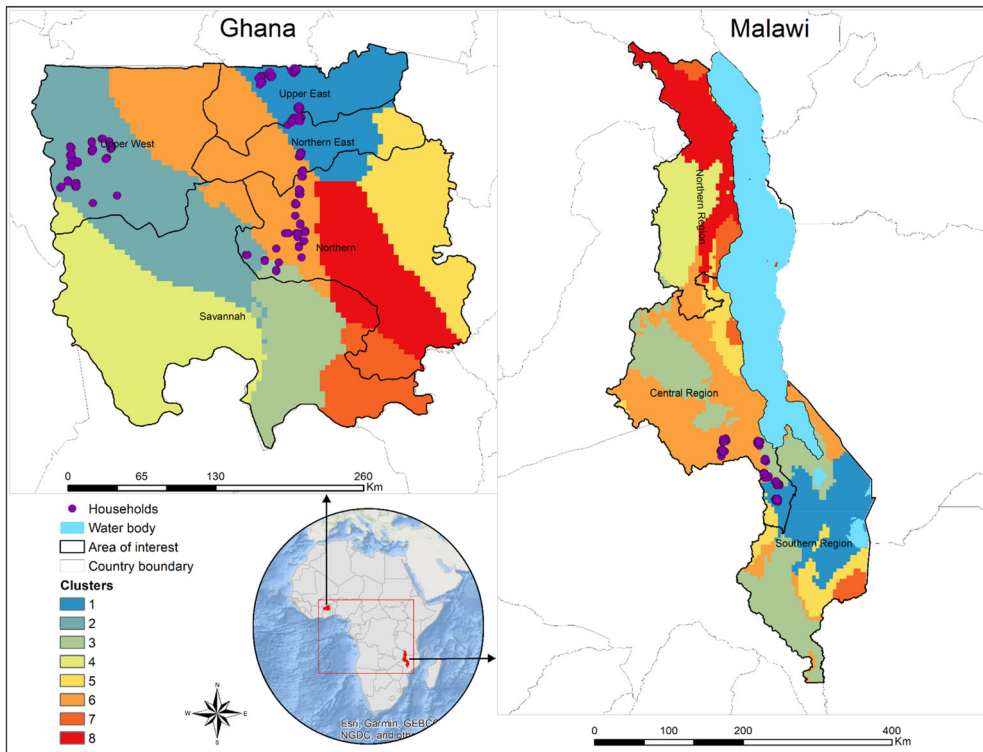
It is commonly assumed that machine learning methods like RF are immune to overfitting. However, including skewed training samples, and irrelevant and redundant predictor variables can significantly overfit the model when extrapolating beyond the areas where the model was trained (Meyer et al. 2018, Meyer et al. 2019; Meyer and Pebesma 2021). Furthermore, most data in nature are geographically dependent. Ignoring spatial dependencies in machine learning models might result in models that perform well on training data but fall short on spatial predictions (Meyer et al. 2019). As a result, applying feature selection approaches that incorporate target-oriented cross-validation (CV) processes, such as Leave-Location-Out (LLO), is critical for improving the model's performance beyond the training area and preventing spatial overfitting (Meyer et al. 2019).

In this study, we used a panel household survey data on maize yield and agronomic practices from Ghana and Malawi to 1) identify the target-oriented feature selection and cross-validation strategies that improve the performance of the RF model for predicting maize yield; 2) identify the most important sustainable agriculture intensification practices and socio-economic factors that explain variance in maize yield; and 3) predict the spatial distribution of maize yield under different management practices. The results of this research will provide information on where to scale out specific bundles of sustainable agriculture intensification (SAI) technologies with a low probability of failure.

## 2. Materials and methods

### 2.1. Study area

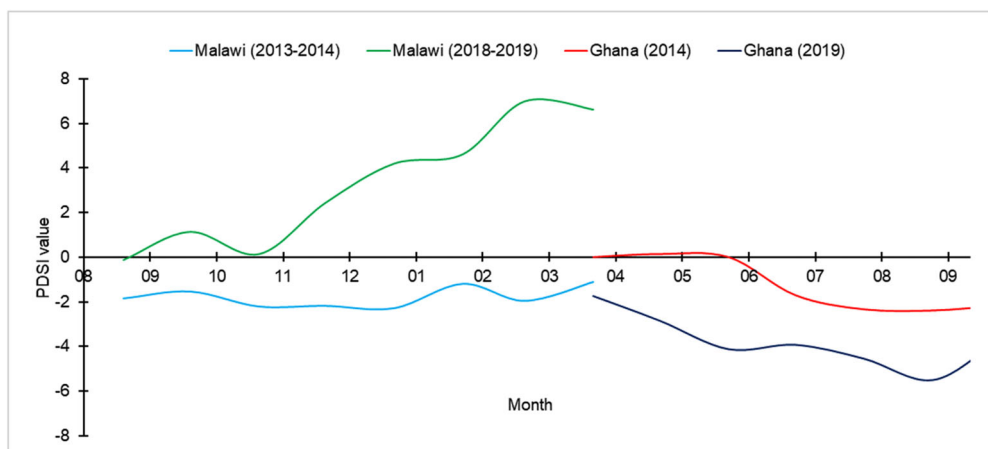
The study area covers two countries in SSA i.e. Ghana and Malawi (Figure 1). Maize is a crucial crop in both countries, and its growth is heavily dependent on rainfall. Around



**Figure 1.** Map of the study showing the location of the survey households and zones with relatively similar rainfall patterns. The rainfall zones were generated from long-term (2014–2020) aggregation of annual TerraClimate satellite rainfall estimates.

90% of smallholder farmers in Ghana and 97% in Malawi rely on maize farming as their primary source of income (Msowoya et al. 2016; Scheiterle and Birner 2018; White 2019). In Ghana, approximately 85% of maize production is consumed by humans, providing about 30% of the combined calorie intake when combined with other cereals such as rice and wheat, while the remaining 15% is used for animal feed to supplement poultry and livestock production (Andam et al. 2017; Adu et al. 2021). In Malawi, maize makes up more than half of the total calorie intake, with the central region having the largest harvested area, followed by the southern region (Warnatzsch et al. 2020). Soil infertility and inadequate use of improved cultivars are the two major obstacles to maize productivity in Ghana (Marfo-Ahenkora 2020), while in Malawi, the total family income and off-farm employment are the major determinants of maize yield productivity (Tamene et al. 2016). Climate variability has exacerbated maize productivity, resulting in malnutrition, poor human development, and a higher poverty index among small-scale farmers who rely on maize production for a living (Shi and Tao 2014; Parkes et al. 2018; Ngcamu and Chari 2020). As a result, determining the best agronomic strategies for increasing maize yield at the farm level will allow these countries to make data-driven decisions to increase yield.

The Palmer Severity Drought Index (PDSI) is a reliable measure used to assess the level of dryness or wetness in comparison to a historical average for a specific time period. In our study we utilised the PDSI (Abatzoglou et al. 2018) to evaluate the weather conditions for the two regions and seasons. We observed that the 2018–2019 growing season in Malawi was very wet while rainfall in all other seasons of both regions was below the normal ranges with extreme droughts in Ghana during 2019 season (Figure 2).



**Figure 2.** The average Palmer Drought Severity Index (PDSI) values for the growing seasons of Malawi and Ghana in 2013–2014 and 2018–2019. The growing season for Ghana spans from April to October, while for Malawi, it takes place between October and April of the following year.

**Table 1.** Variables used in the models.

Class	Continuous variables	Categorical variables
Demographics	Household size (Hhsize), age of the household head (Headage), the number of education years for the household head (Headedu), maximum years of adult education (Edumax), average years of adult education (Meanedu) and plots fully managed by female (FemplotsF).	Female headed households (Femhead)
Production practices	Area intercropped (intercropHa), fertilizer kg/ha (FertHa), pesticide value/ha (PestHa), area under maize cultivation (MaizeA), land size (Landsize), number of plots owned (Nplots), livestock units (TLU), number of crops farmed (Ncrop), crop diversity (CropD), livestock diversity (LvstD) and total income (Totincome).	Practice intercropping (Intercrop), applies manure (Manure), uses hired labour (Labour), uses pesticides (Pest), any residue left on farm (Residue), practices crop rotation (Rotation), can get credit (Credit), applies fertilizer (Fertilizer), practice following (Fallow), soil erosion (Erosion).

The text in brackets indicate how the variables are referred to in various figures.

## 2.2. Agronomic data

A panel household survey was conducted in Ghana and Malawi in 2013 and 2019 under the Africa RISING program (<https://africa-rising.net/>; Tinonin et al. 2016). During the two surveys, respondents provided information on household demographics and production practices (Table 1).

## 2.3. Remote sensing variables

The gridded earth observation data were extracted using Google Earth Engine (GEE) cloud computing platform (Gorelick et al. 2017). These variables include the vegetation indices, meteorological, topography, socio-economic, hydrological, and soil properties (Table 2). Vegetation indices and meteorological data were generated for each month during the respective country's maize growing season.

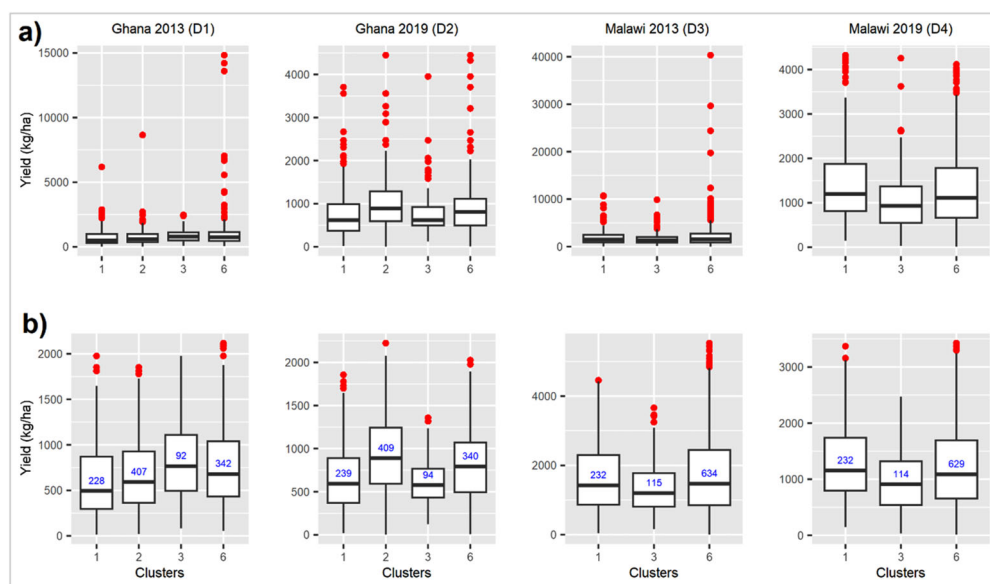
## 2.4. Model training and evaluation

Eliminating irrelevant and redundant predictor variables in machine learning models is important because their inclusion can reduce the model's performance. While many

**Table 2.** Gridded environmental and weather data used in the model.

	Variable name and reference	Original spatial resolution (m)	Rationale/hypothesis
Vegetation indices	Monthly Enhanced Vegetation Index (EVI MODIS; janEVI, febEVI, marEVI, aprEVI, julEVI, junEVI, augEVI, octEVI, novEVI, decEVI - Didan 2015). The intext annotations are;	250	Vegetation indices are essential in agriculture as they assess plant health and vigor. They are sensitive to changes in growth and development, which directly affect crop yield. Among the vegetation indices, EVI is particularly significant in predicting maize yield (Zhang et al. 2019; Meng et al. 2021) because it can more accurately capture changes in vegetation in varying atmospheric conditions and soil backgrounds.
Hydro-meteorological	Monthly precipitation, soil moisture (Soilm) and PDSI (pdsi) (TerraClimate Abatzoglou et al. 2018).	4000	To support growth, maize roots need a proper amount of soil moisture to absorb nutrients effectively. Low soil moisture levels can lead to drought stress, causing reduced yields. Similarly, high soil moisture levels can also be harmful, as it may lead to waterlogging and a decrease in oxygen availability to the roots, resulting in lower yields. Hence, maintaining an appropriate level of soil moisture is crucial for optimizing maize yield.
Topography	Elevation (DEM - Farr et al. 2007).	30	Elevation has a significant impact on maize yield as it affects temperature and rainfall levels. Generally, higher elevations have cooler temperatures that can affect the rate of maize development and the length of the growing season. Moreover, higher elevations usually receive more rainfall, which is advantageous for maize growth and development, but excessive or irregular rainfall can cause waterlogging or drought stress and lower the maize yield.
Socio-economic	Livestock density (LivDens) - ( <a href="https://www.fao.org/livestock-systems/global-distributions/en/">https://www.fao.org/livestock-systems/global-distributions/en/</a> ). Access to markets (MarketAccess) - (Cattaneo et al. 2021).	10000	Livestock can have both positive and negative impacts on maize yield. On the one hand, their manure can provide essential nutrients that have been linked to increased maize productivity. However, when livestock density is too high, it can result in competition for crop residue. In such cases, most of the residue is consumed by the livestock, leaving only a small amount of organic matter in the soil, which can lower soil nutrient levels and ultimately reduce maize yield.
Soil properties	Cation carbon exchange (CEC), organic carbon (OrgCab), soil ph (Soilph), soil bulk density (Soilbulk), clay, silt and sand (ISDA - Hengli et al. 2021).	30	Soil structure, organic matter, and key soil nutrients like nitrogen, phosphorus, and potassium are crucial for maize growth and yield. High levels of organic matter improve soil structure, water-holding capacity, and fertility, leading to higher maize yields. Deficiencies in any of these nutrients can reduce yield, emphasizing the importance of managing soil properties for optimal maize production.

The text in brackets anotate how the variables are referred to in various figures.



**Figure 3.** Boxplots showing the distribution of the maize yield data for Ghana and Malawi with (a) and without (b) outliers were removed. The blue text is the number of households per cluster. The clusters are as described in Figure 1.

feature elimination techniques are available, we used the VSURF feature elimination method, which is included in the VSURF package (Genuer et al. 2022) in the R programming (R Core Team, 2020), to eliminate irrelevant or redundant variables. VSURF eliminates feature in three processes i.e. thresholding, interpretation and predictive step. The first step eliminates irrelevant variables from the dataset. The second step selects all variables related to the response for interpretation purpose. The third step refines the selection by eliminating redundancy in the set of variables selected by the second step, for prediction purpose. We focused on variables that were retained at the thresholding step, which retains or drops variables based on how important they are in explain the response variables. Because most continuous household survey data lacked corresponding raster data, we developed models that included all household survey data and those that only had categorical data to enable spatial predictions under various agronomic scenarios. To elaborate, the categorical household survey data allowed these variables to be converted into dummy variables, which could then be combined with the gridded raster data and toggled on (1) or off (0) to visualize the impact of using or not using the respective agronomic variable. What ‘appending dummy variables to gridded data’ does is create a gridded layer of zeros for each pixel (not using agronomic practices), and this layer can be turned on by replacing all values with 1, indicating that all spaces use the agronomic variable. The VSURF elimination method was applied to the two sets of the dataset (all predictors and only categorical household survey data) independently. We used the ‘ranger’ method, as implemented by the train function in the caret R package (Khun 2022), to train the maize yield models and used the permutation method to rank the variable importance. Before training the model, we used the CAST package to generate training and testing folds of Leave-Location-Out (LLO) cross-validation. The LLO methodology internally subsets the testing and training set and thus we did not withhold any data for independent testing of the models. We then optimized the model by calculating the best mtry for each dataset separately. The Root Mean Square Error (RMSE) and R-squared ( $R^2$ ) values were used to

assess the model's performance where higher  $R^2$  and lower RMSE values indicate a better model performance. We employed the *varImp* function in the caret package to determine and rank the significance of the variables. To gain insights into the relationship between maize yield and the predictors, we generated partial dependence plots for the top six predictors using the *pdp* R package (Greenwell 2022). These plots provide a visual representation of the direction of the relationship between the response and the predictor variable.

### 3. Results

#### 3.1. Descriptive analysis

We investigated the distribution of maize yield for each season and country at different rainfall clusters using box plots (Figure 3). To annotate the various datasets, we will refer to Ghana data as D1 and D2 for the 2013 and 2019 surveys, respectively, and Malawi data as D3 and D4 for the 2013 and 2019 surveys, respectively.

To better understand the distribution of maize yield data based on all the predictor variables, we created histograms (Appendix 1) for various continuous variables for each country and season individually. The total number of predictor variables for D1 and D3 was 43, while D2 had 56 predictors and D4 had 57 predictors.

#### 3.2. Feature elimination

The count of predictor variables that remained after elimination is presented in Table 3. Additional information on the actual names of the predictors that were retained can be found in the supplementary information (SS1).

#### 3.3. Model performances, variable importance, partial dependence plots and spatial predictions

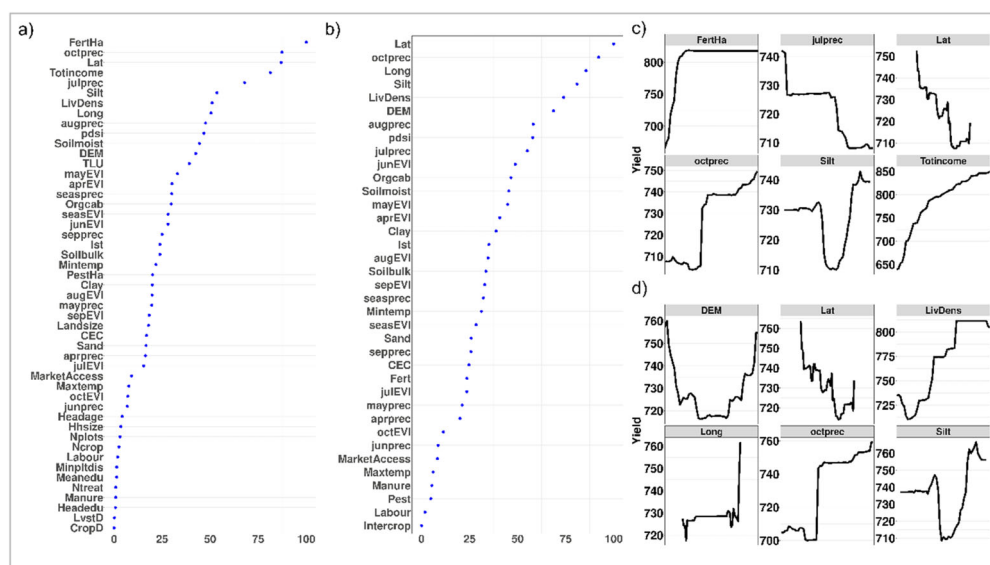
The models only explained a small variability in maize yield with low  $R^2$  values across all seasons for each country (Table 4). When continuous household data were used, the explained variability was greater (11–15% in Northern Ghana and 24–35% in Malawi) than when only categorical data were used (6–10% in Northern Ghana and 7–14% in

**Table 3.** The number of retained predictor variables after the VSURF thresholding step.

Model	D1	D2	D3	D4
All predictors	49	51	52	52
Categorical HH + satellite data	37	39	39	42

**Table 4.** Model performance metrics when all predictors were used and when only the categorical household survey was used.

	Ghana				Malawi			
	All		Categorical		All		Categorical	
	D1 $\mu = 712.28$	D2	D1	D2 $\mu = 820.43$	D3 $\mu = 1663.03$	D4	D3	D4 $\mu = 1210.15$
RMSE	415.88	407.20	426.89	418.72	906.48	635.99	1038.53	703.88
nRMSE	0.58	0.57	0.52	0.51	0.54	0.52	0.62	0.58
$R^2$	0.11	0.15	0.06	0.10	0.35	0.24	0.14	0.07



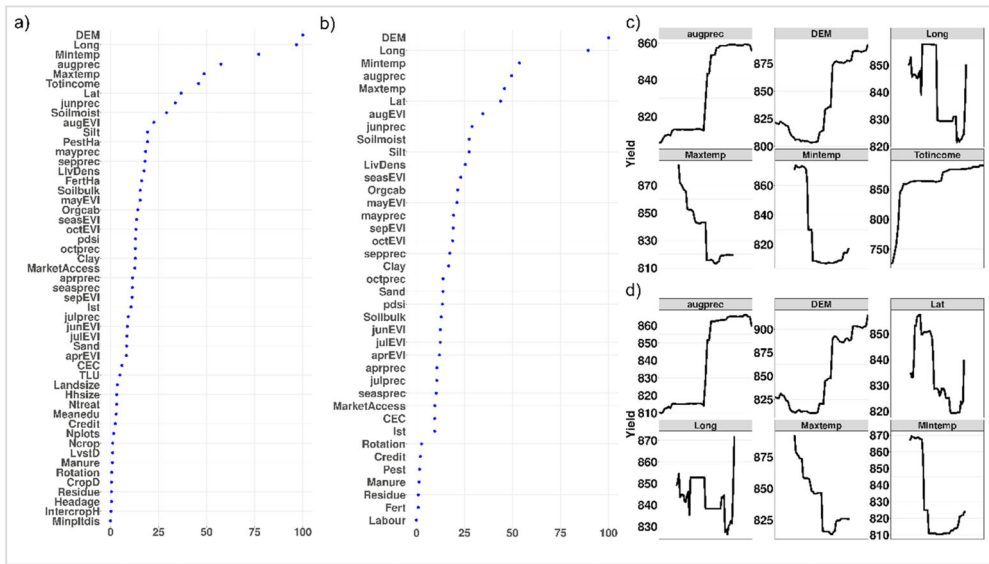
**Figure 4.** Variable importance and partial dependence plots for Ghana in 2013. (a) and (b) All predictor and categorical variables importance plots respectively. (c) and (d) Partial dependence plots for the top 6 predictors with all predictors and only with categorical variables respectively.

MalawiThis implies that the quantity of measurable agronomic practices used explains yield variability better than whether or not that agronomic variable is used. For both countries and seasons, the RMSE values obtained were consistently high, with normalized RMSE values (nRMSE; RMSE/mean yield) exceeding 50%. These values suggest that the model predictions were either overestimating or underestimating the actual yield by a significant margin, often by as much as twice or half the true value. The results underscore the necessity of refining the predictive model to enhance its accuracy and practical applicability.

Previous studies have reported the usefulness of fertilizer application in increasing maize yield in Northern Ghana (Braimoh and Vlek 2006; Kanton et al. 2016; Buah et al. 2017). Our analysis identified the amount of fertilizer used per hectare and total income (Figure 4a) as the most significant agronomic practices that positively (Figure 4c) influenced maize yield in Ghana in 2013. Interestingly, when considering only the categorical version of the agronomic practices, the importance of these two variables was relatively low (Figure 4b), indicating that the quantity used mattered more than simply their presence or absence. Both datasets showed that the total amount of rainfall experienced in October - which marks the end of the season - had a positive influence on maize yield (Figure 4c and d). Agronomic practices were found to be poorly correlated with maize yield variability in 2019 (Figure 5a and b). Instead, the most significant factors influencing yield productivity were August precipitation, which had a positive effect, and temperature, which had a negative impact (Figure 5c and d). The observed dynamics may be attributed to the exceptionally dry season (Figure 2), which resulted in reduced soil moisture and likely exacerbated the effects of temperature on yield.

The spatial prediction maps indicated that introducing fertilizer as an agronomic practice resulted in minimal improvements in maize yield in both seasons (Figure 6a and b). The yield gain observed was relatively low (<50kg/ha) but parts of the upper west and northern region had higher yield gain of more than 50 kg/ha (Figure 6c). The limited yield gain observed may be attributed to two key factors: first, the relatively dry



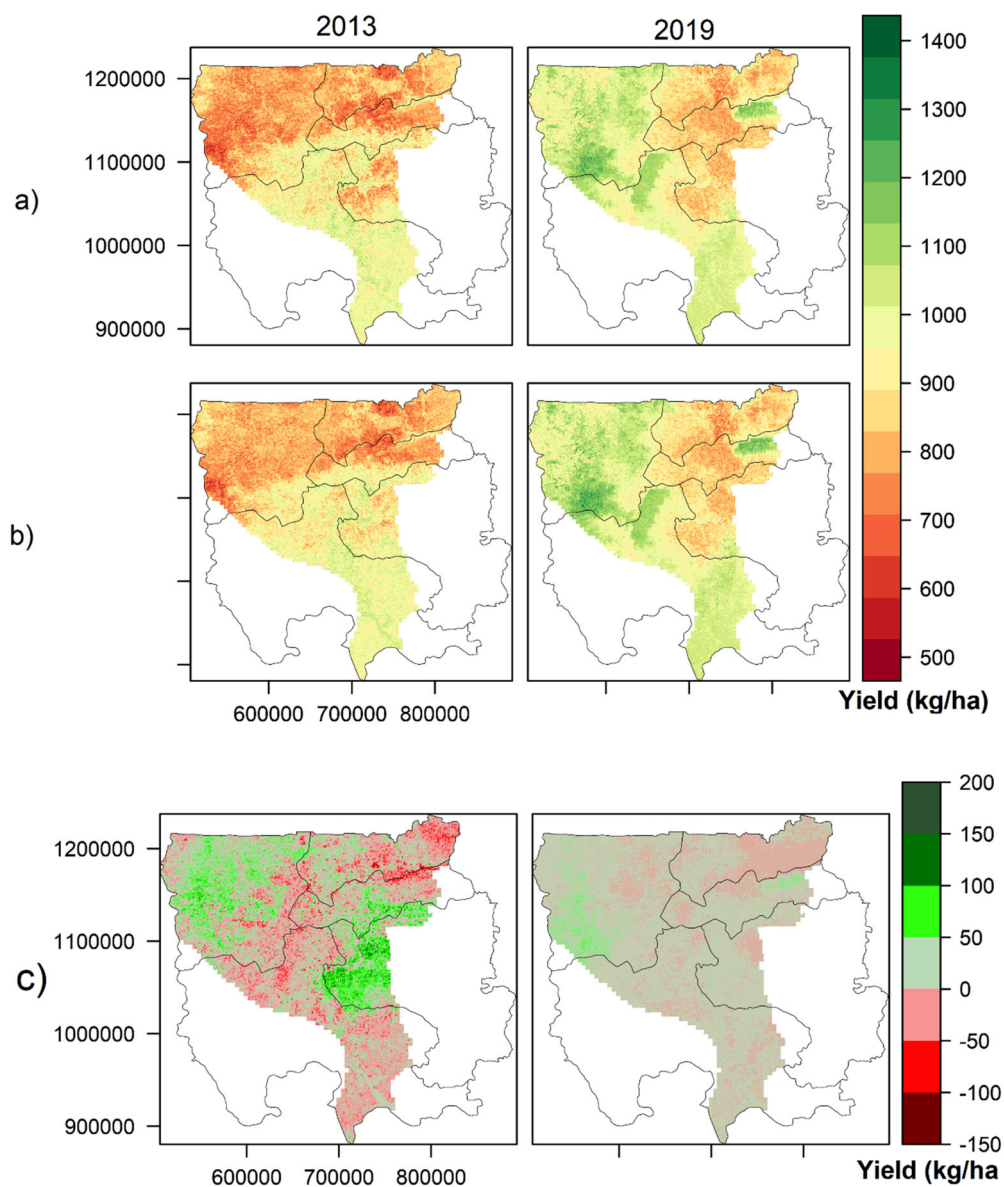


**Figure 5.** Variable importance and partial dependence plots for Ghana in 2019. (a) and (b) All predictor and categorical variables importance plots respectively. (c) and (d) Partial dependence plots for the top 6 predictors with all predictors and only with categorical variables respectively.

conditions during the two seasons (Figure 2); and second, the low ranking of fertilizer use (yes/no) as a significant predictor of yield.

While recent studies have found a limited yield response to fertilizer use in Malawi (Burke et al. 2022; De Weerd and Duchoslav 2022), several other studies have demonstrated that applying fertilizer and improving access to it can significantly boost maize yield productivity (Sauer and Tchale 2009; Wang et al. 2019; Burke and Jayne 2021; Cairns et al. 2021; Cassim and Pemba 2022). According to the 2013 season analysis, fertilizer usage per hectare and the extent of land devoted to maize cultivation were the primary factors accounting for yield variability (Figure 7a), with the former exerting a positive effect and the latter having a negative impact, respectively (Figure 7c). Although soil moisture was identified as the most critical variable affecting maize yield when categorical agronomic practices were employed for predictions (Figure 7b), the observation that yield declined with increasing soil moisture (Figure 7d) during a relatively dry season (Figure 2) is perplexing. Fertilizer use (both quantity and yes/no) was an important factor in 2019 (Figure 8a and b) with a positive effect on maize yield (Figure 8c and d). Total household income and labor were significant factors as continuous variables this season, but labor was less important in categorical analysis (Figure 8a and b). Livestock density had the most significant positive impact in categorical analysis, likely due to manure use and its positive effect on maize yield (Wang et al. 2019).

Spatial predictions based on agronomic models demonstrated that the introduction of fertilizer in the 2019 growing season resulted in a significantly greater increase in maize yield as compared to the 2013 season (Figure 9). This outcome may be attributed to the favorable soil moisture conditions in 2019 (Figure 2), which allowed for enhanced fertilizer uptake by crops and ultimately contributed to improved yield. Even so, it is important to note that the average maize yield was higher in 2013 as compared to 2019. Two possible reasons could explain this phenomenon: Firstly, the prevalence of extreme floods and soil erosion in Malawi (McCarthy et al. 2021) may have reduced crop yield,

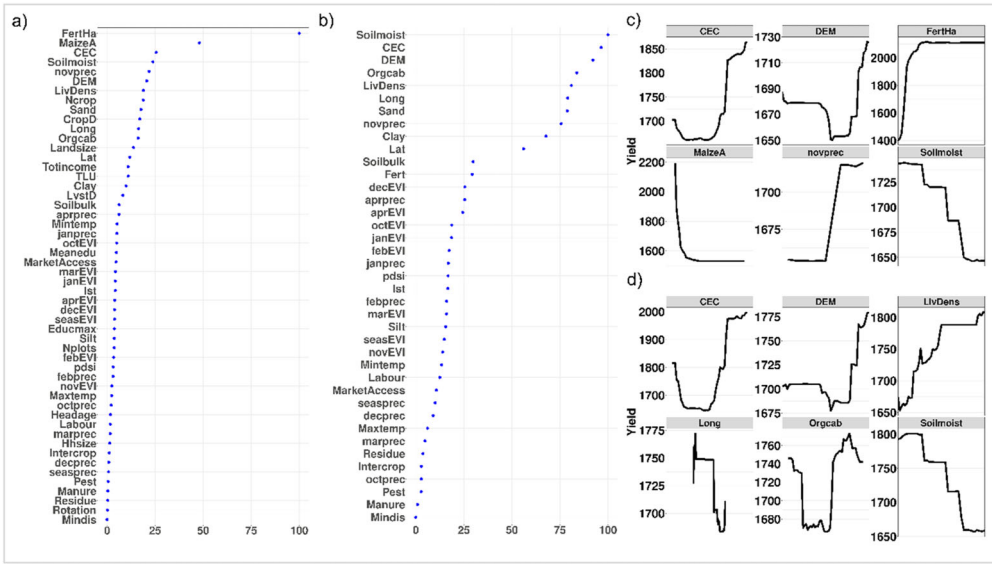


**Figure 6.** The spatial maize yield prediction and yield gain for Ghana in 2013 and 2019 when fertilizer use was incorporated as a useful agronomic practice. (a) When no agronomic practice was used. (b) Fertilizer use and (c) yield gain/loss (Figure 6b – Figure 6a).

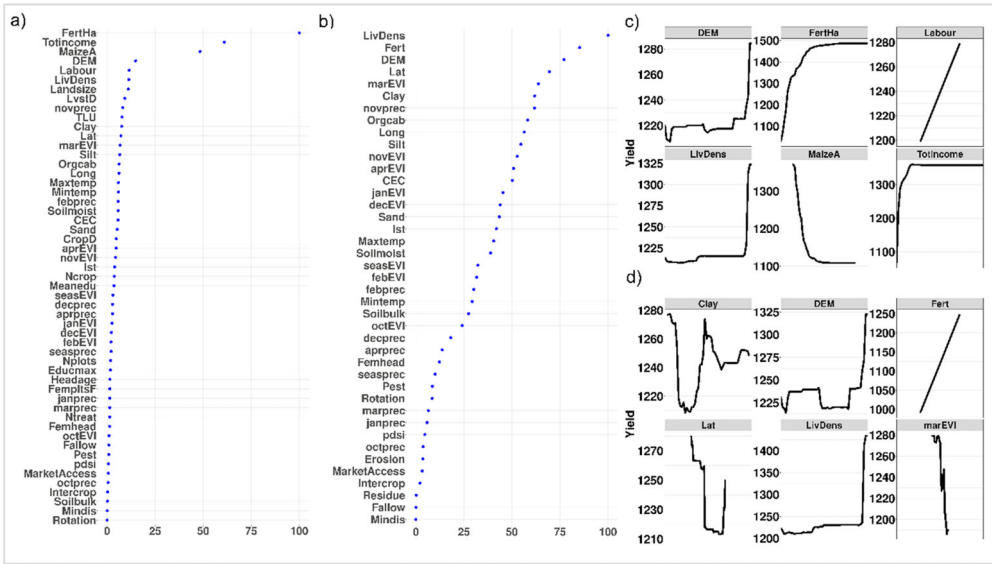
particularly given the excessively wet weather in 2019. Secondly, excessively moist environments can increase the incidence of corn ear infections (Wang et al. 2019), thereby leading to a decline in yield.

#### 4. Discussion

This study examined the factors that affect the maize yield in different regions and periods in northern Ghana and Malawi. To do this, we looked at various biophysical, socio-

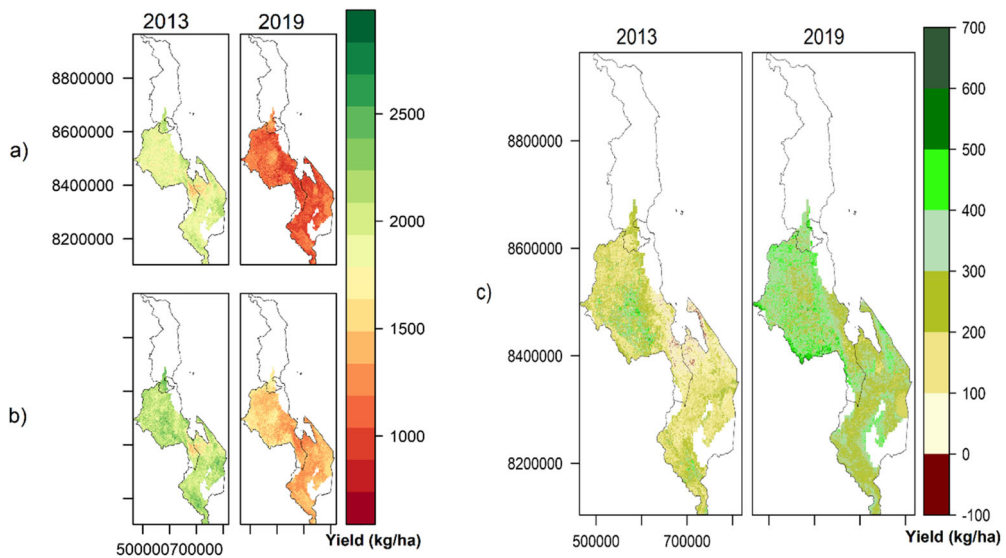


**Figure 7.** Variable importance and partial dependence plots for Malawi in 2013. (a) and (b) All predictor and categorical variables importance plots respectively. (c) and (d) Partial dependence plots for the top 6 predictors with all predictors and only with categorical variables respectively.



**Figure 8.** Variable importance and partial dependence plots for Malawi in 2019. (a) and (b) All predictor and categorical variables importance plots respectively. (c) and (d) Partial dependence plots for the top 6 predictors with all predictors and only with categorical variables respectively.

economic and farm management practices as potential predictors and used a random forest machine learning algorithm with spatial blocking cross-validation. Despite efforts to develop accurate models, the performance was suboptimal, with explained variability ranging from 6 to 15% in Ghana and between 7 to 35% in Malawi over the course of two seasons (Table 4). While it is true that spatial blocking cross-validation can lead to



**Figure 9.** The spatial maize yield prediction and yield gain for Malawi in 2013 and 2019 when fertilizer use was incorporated as a useful agronomic practice. (a) When no agronomic practice was used. (b) Fertilizer use and (c) yield gain/loss (Figure 9b – Figure 9a).

reduced  $R^2$  values (Meyer et al. 2018; Meyer et al. 2019; Meyer and Pebesma 2021), there may be other factors that may have contributed to the underperformance of the models. For example, farmers reported yields from a different number of plots that were spatially displaced. These imprecise locations of farmer plots could have introduced errors when matching with remote sensing variables (Burke and Lobell 2017; Lobell et al. 2020). This can be resolved by aggregating the yield data into larger administrative zones although the practice can mask details in heterogeneous farms. Alternatively, we recommend that household surveys should endeavour to precisely map the plot boundaries to enable matching with satellite data. Also, the maize yield data was based on self-reported estimates and numerous studies have shown that self-reported estimates are frequently inaccurate when compared to farm-level estimates derived from actual harvest measurements (Jin et al. 2017; Scheiterle et al. 2019; Burke et al. 2020; Li et al. 2022).

The low spatial resolution of the predictor variables used in the models, which were resampled from about 4 to 0.03 km, could also be a contributing factor to the poor performance of the models. Generating reliable satellite-based productivity estimates for smallholder farms in sub-Saharan Africa, which are typically characterized by small land size and intercropping, is unlikely when using low spatial resolution data due to the presence of mixed crops within a single pixel (Jin et al. 2017; Li et al. 2022). Studies have demonstrated that utilizing higher spatial resolution satellite data, such as those provided by the Sentinel-2 mission (10 m) and PlanetScope (3 m), has resulted in improved model performance ( $R^2 > 0.5$ ; Li et al. 2022). However, the utility of such high-resolution data is limited by frequent cloud cover and requires significant computational resources, particularly when analyzing vast areas. Furthermore, the choice of satellite-based predictor variables used in this study may have been insufficient in explaining the variations in maize yield. According to Jin et al. (2017) and Burke and Lobell (2017) Green Chlorophyll Vegetation Index (GCVI) is more effective at predicting maize yield than other vegetation indices, likely due to its ability to capture nutrient deficiency, which is highly correlated

with yield. In addition, factors such as Leaf Area Index (LAI), radiation, and sowing period have been identified as good predictors of maize yield in several studies (Srivastava et al. 2017; Lambert et al. 2018; Danquah et al. 2020; Li et al. 2022).

Maize farming in the sub-Saharan Africa region heavily relies on adequate rainfall, which may explain why precipitation and soil moisture emerged as significant factors in explaining the variability of maize yield. Both Malawi and Ghana have made significant investments in fertilizer subsidy programs as part of their efforts to increase maize productivity (Mapila et al. 2012; Fearon et al. 2015; Ragasa and Chapoto 2017; Scheiterle and Birner 2018; Andani et al. 2020; Cassim and Pemba 2022; De Weerd and Duchoslav 2022). There is a debate on the usefulness of fertilizer subsidy programs, with some studies reporting low yield response (Benin et al. 2013; Fearon et al. 2015; Andani et al. 2020; Burke et al. 2022), while others suggest that these programs have led to improved maize productivity by making fertilizers more accessible and increasing their usage (Brimoh and Vlek 2006; Chibwana et al. 2014; Kanton et al. 2016; Buah et al. 2017; Wang et al. 2019). Our results suggest that the application of fertilizer can significantly enhance maize production in both Malawi and Ghana during seasons with adequate soil moisture. This could be attributed to the fact that both countries face challenges of low soil fertility caused by a combination of factors such as low nutrient levels, continuous cropping, overgrazing, deforestation, and poor soil and water management practices (Tittonell and Giller 2013; Vuntade et al. 2022).

In terms of yield gain/loss, Malawi saw the highest increase in maize yield (Figure 9) when fertilizers were used, while Ghana experienced a much smaller increase (Figure 6). The high yield gain in Malawi could be because several studies have linked the use of fertilizer, urea, and manure to high maize yield (Snapp et al. 2014; Tamene et al. 2016; Liu and Basso 2017; Wang et al. 2019), as well as intercropping, which acts as a soil fertility replenishment (Akinnesi et al. 2006; Silberg et al. 2017). The difference in yield gain between Ghana and Malawi in 2019 may be attributed to Ghana's comparatively dry season and Malawi's comparatively wet season, which likely explains why Ghana's yield increase was low (<50 kg/ha) while Malawi's was high (> 400 kg/ha). Another possible reason why the Ghana season had a lower yield increase could be the limited access to modern agricultural practices, such as mechanization and the use of improved seed varieties, which continue to constrain productivity (Ragasa and Chapoto 2017).

The presence of parasitic weeds like Striga (Scheiterle et al. 2019; Adu et al. 2022; Martey et al. 2022) and pests like fall armyworm (Agboyi et al. 2020; Nagoshi et al. 2021; Yeboah et al. 2021) outbreaks in maize farms and increased cost of pesticide that hinders their control could also be a contributing factor to why fertilizer use does not necessarily result in increased yields. Although hand-picking of the striga weed is a commonly used method, it is not sustainable in the long term (Kabambe et al. 2008; Wang et al. 2019). Therefore, an integrated approach that incorporates different control methods is necessary to effectively manage the weed. Push-Pull technology, which involves planting desmodium and bracharia grass, has been shown to effectively reduce striga weed infestation and ultimately increase maize yield, offering a sustainable and integrated approach to weed control (Niassy et al. 2022). To potentially enhance maize yield productivity, factors such as timely fertilizer application, adjusting planting dates to accommodate climate variability (Fosu-Mensah et al. 2019; Warnatzsch and Reay 2020), educating farmers on the appropriate fertilizer amounts (Addai and Owusu 2014; Asante et al. 2019; Wang et al. 2019; Andani et al. 2020; Cairns et al. 2021; Setsoafia et al. 2022), and promoting the adoption of improved seed varieties may also be beneficial.

Despite the poor performance of the models in this study, we have identified important variables that are consistent with existing knowledge and previous studies on maize yield. To enhance the model performance, we recommend the following: 1) include satellite-based factors like GCVI and LAI, which have shown better performance in predicting yield; 2) integrate a crop classification map that distinguishes maize and non-maize fields; 3) refine yield data using simple thresholds and generate categorical predictive maps rather than actual yield; and 4) explore simple regression models that directly correlate yield data with vegetation indices, as these have been found to better explain variations in maize yield in sub-Saharan African countries (Jin et al. 2017; Li et al. 2022).

## 5. Conclusion

The identification of maize yield determinants through the use of household survey data and low spatial resolution satellite-based estimates of the environment has produced a model that performs moderately. Nonetheless, the significant variables identified align with existing knowledge of the factors that affect maize yield variability both at the farm and larger administrative levels. The findings of this study suggest that promoting the use of fertilizers is a viable option for improving maize yield in Ghana and Malawi. Additionally, since precipitation plays a crucial role in determining yield, it is recommended that measures such as rainwater harvesting be promoted to help cushion against the impact of extreme dry seasons.

## Acknowledgements

This study was partly funded by USAID through grant number: AID-BFS-G-11-00002 under the Feed the Future initiative to support Africa RISING program. We would like to thank all funders who support the Sustainable Intensification of Mixed Farming Systems Initiative through their contributions to the CGIAR Trust Fund. The authors further acknowledge funding from Bill and Melinda Gates Foundation (BMGF) for grant number INV-005431 in support of Excellence in Agronomy Initiative.

## Disclosure statement

Authors declare no conflict of interest.

## Data availability statement

All the R programming scripts and excel files used in fitting the models are available in github repository (<https://github.com/Muthono19/Predicting-Maize-Yield-in-Ghana-and-Malawi.git>). The remote sensing data used is open source and can be downloaded through GEE.

## References

- Abatzoglou JT, Dobrowski SZ, Parks SA, Hegewisch KC. 2018. TerraClimate, a high-resolution global dataset of monthly climate and climatic water balance from 1958–2015. *Sci Data*. 5(1):1–12. doi: 10.1038/sdata.2017.191.
- Addai KN, Owusu V. 2014. Technical efficiency of maize farmers across various agro ecological zones of Ghana. *J Agric Environ Sci*. 3(1):2334–2412.
- Adu GB, Badu-Apraku B, Akromah R, Amegbor IK, Adogoba DS, Haruna A, Manigben KA, Aboyadana PA, Wiredu AN. 2021. Trait profile of maize varieties preferred by farmers and value chain actors in northern Ghana. *Agron Sustain Dev*. 41(4):50. doi: 10.1007/s13593-021-00708-w.

- Adu GB, Badu-Apraku B, Akromah R, Awuku FJ. 2022. Combining abilities and heterotic patterns among early maturing maize inbred lines under optimal and striga-infested environments. *Genes*. 13(12):2289. doi: [10.3390/GENES13122289/S1](https://doi.org/10.3390/GENES13122289/S1).
- Agboyi LK, Goergen G, Beseh P, Mensah SA, Clottey VA, Glikpo R, Buddie A, Cafã G, Offord L, Day R, et al. 2020. Parasitoid complex of fall armyworm, *Spodoptera frugiperda*, in Ghana and Benin. *Insects*. 11(2):68. doi: [10.3390/insects11020068](https://doi.org/10.3390/insects11020068).
- Ahmad I, Saeed U, Fahad M, Ullah A, Habib Ur Rahman M, Ahmad A, Judge J. 2018. Yield forecasting of spring maize using remote sensing and crop modeling in Faisalabad-Punjab Pakistan. *J Indian Soc Remote Sens*. 46(10):1701–1711. doi: [10.1007/S12524-018-0825-8/METRICS](https://doi.org/10.1007/S12524-018-0825-8/METRICS).
- Akinnifesi FK, Makumba W, Kwesiga FR. 2006. Sustainable maize production using gliricidia/maize intercropping in southern Malawi. *Ex Agric*. 42(4):441–457. doi: [10.1017/S0014479706003814](https://doi.org/10.1017/S0014479706003814).
- Andam K, Johnson M, Ragasa C, Kufolal D, Das Gupta S. 2017. A Chicken and Maize Situation: the Poultry Feed Sector in Ghana, AgriSciRN: Agribusiness (Topic).
- Andani A, Moro A-HB, Issahaku G. 2020. Fertilizer subsidy policy and smallholder farmers' crop productivity: the case of maize production in North-Eastern Ghana. *J Agric Extens Rural Dev*. 12(2):18–25. doi: [10.5897/JAERD2020.1138](https://doi.org/10.5897/JAERD2020.1138).
- Asante BO, Temoso O, Addai KN, Villano RA. 2019. Evaluating productivity gaps in maize production across different agroecological zones in Ghana. *Agric Syst*. 176:102650. doi: [10.1016/j.agsy.2019.102650](https://doi.org/10.1016/j.agsy.2019.102650).
- Benin S, Johnson M, Abokyi E, Ahorbo G, Jimah K, Nasser G, Owusu V, Taabazuing J, Tenga A. 2013. Revisiting agricultural input and farm support subsidies in Africa: the case of Ghana's mechanization, fertilizer, block farms, and marketing programs. *SSRN J*. doi: [10.2139/ssrn.2373185](https://doi.org/10.2139/ssrn.2373185).
- Braimoh AK, Vlek PLG. 2006. Soil quality and other factors influencing maize yield in northern Ghana. *Soil Use Manage*. 22(2):165–171. doi: [10.1111/j.1475-2743.2006.00032.x](https://doi.org/10.1111/j.1475-2743.2006.00032.x).
- Buah SSJ, Ibrahim H, Derigubah M, Kuzie M, Segtaa JV, Bayala J, Zougmore R, Ouedraogo M.,. 2017. Tillage and fertilizer effect on maize and soybean yields in the Guinea savanna zone of Ghana. *Agric Food Secur*. 6(1):1–11. doi: [10.1186/S40066-017-0094-8/TABLES/5](https://doi.org/10.1186/S40066-017-0094-8/TABLES/5).
- Burke M, Lobell DB. 2017. Satellite-based assessment of yield variation and its determinants in smallholder African systems. *Proc Natl Acad Sci U S A*. 114(9):2189–2194. doi: [10.1073/PNAS.1616919114/SUPPL\\_FILE/PNAS.201616919SI.PDF](https://doi.org/10.1073/PNAS.1616919114/SUPPL_FILE/PNAS.201616919SI.PDF).
- Burke WJ, Jayne TS. 2021. Disparate access to quality land and fertilizers explain Malawi's gender yield gap. *Food Policy*. 100:102002. doi: [10.1016/j.foodpol.2020.102002](https://doi.org/10.1016/j.foodpol.2020.102002).
- Burke WJ, Jayne TS, Snapp SS. 2022. Nitrogen efficiency by soil quality and management regimes on Malawi farms: can fertilizer use remain profitable? *World Dev*. 152:105792. doi: [10.1016/j.worlddev.2021.105792](https://doi.org/10.1016/j.worlddev.2021.105792).
- Burke WJ, Snapp SS, Jayne TS. 2020. An in-depth examination of maize yield response to fertilizer in Central Malawi reveals low profits and too many weeds. *Agric Econ*. 51(6):923–940. doi: [10.1111/agec.12601](https://doi.org/10.1111/agec.12601).
- Cai Y, Guan K, Lobell D, Potgieter AB, Wang S, Peng J, Xu T, Asseng S, Zhang Y, You L, et al. 2019. Integrating satellite and climate data to predict wheat yield in Australia using machine learning approaches. *Agric For Meteorol*. 274:144–159. doi: [10.1016/j.agrformet.2019.03.010](https://doi.org/10.1016/j.agrformet.2019.03.010).
- Cairns JE, Chamberlin J, Rutsaert P, Voss RC, Ndhlela T, Magorokosho C.,. 2021. Challenges for sustainable maize production of smallholder farmers in sub-Saharan Africa. *J Cereal Sci*. 101:103274. doi: [10.1016/j.jcs.2021.103274](https://doi.org/10.1016/j.jcs.2021.103274).
- Cassim L, Pemba LA. 2022. The interactive effects of farm input subsidy program and agricultural extension services on smallholder maize production and Technical Efficiency in Malawi. *Malawi J Econ*. 2(1):66–84. Available at: <https://www.ajol.info/index.php/mje/article/view/228064>. (Accessed: 8 March 2023).
- Cattaneo A, Nelson A, McMenomy T. 2021. Global mapping of urban-rural catchment areas reveals unequal access to services. *Proc Natl Acad Sci USA*. 118(2):e2011990118. doi: [10.1073/PNAS.2011990118/SUPPL\\_FILE/PNAS.2011990118.SD01.XLSX](https://doi.org/10.1073/PNAS.2011990118/SUPPL_FILE/PNAS.2011990118.SD01.XLSX).
- Charoen-Ung P, Mittrapiyanuruk P. 2019. Sugarcane yield grade prediction using random forest with forward feature selection and hyper-parameter tuning. *Adv Intell Syst Comput*. 769:33–42. doi: [10.1007/978-3-319-93692-5\\_4/COVER](https://doi.org/10.1007/978-3-319-93692-5_4/COVER).
- Chibwana C, et al. 2014. Measuring the impacts of Malawi's farm input subsidy programme. *Afr J Agric Resour Econ*. 9(2):132–147. doi: [10.22004/AG.ECON.176511](https://doi.org/10.22004/AG.ECON.176511).
- Danquah EO, et al. 2020. Monitoring and modelling analysis of maize of maize (*Zea mays* L) yield gap in smallholder farming in Ghana. *Agriculture*. 10(9):420. doi: [10.3390/AGRICULTURE10090420](https://doi.org/10.3390/AGRICULTURE10090420).

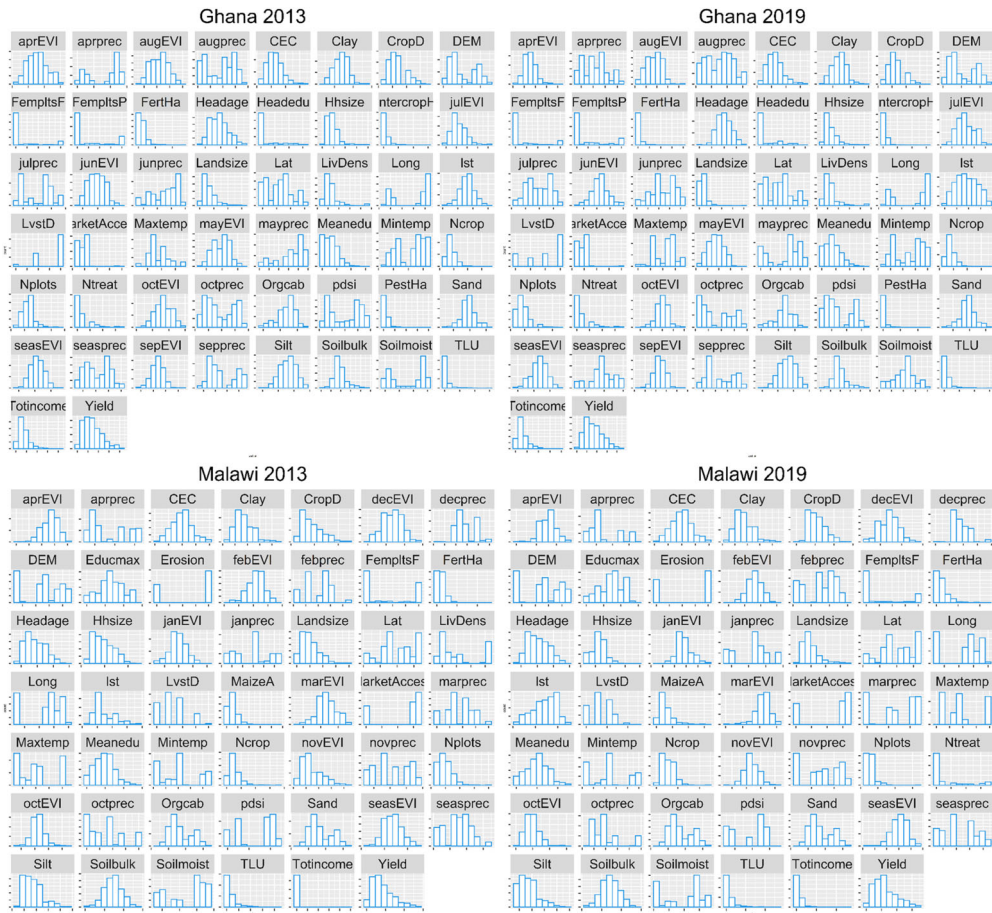
- Delerce S, Dorado H, Grillon A, Rebolledo MC, Prager SD, Patiño VH, Garcés Varón G, Jiménez D. 2016. Assessing weather-yield relationships in rice at local scale using data mining approaches. *PLoS One*. 11(8):e0161620. doi: [10.1371/JOURNAL.PONE.0161620](https://doi.org/10.1371/JOURNAL.PONE.0161620).
- Didan K. 2015. MOD13Q1 MODIS/Terra vegetation indices 16-day L3 global 250m SIN Grid V006 [Dataset]. NASA EOSDIS Land Processes DAAC. accessed 2023-02-22 from doi: [10.5067/MODIS/MOD13Q1.006](https://doi.org/10.5067/MODIS/MOD13Q1.006).
- Everingham Y, Sexton J, Skocaj D, Inman-Bamber G. 2016. Accurate prediction of sugarcane yield using a random forest algorithm. *Agron Sustain Dev*. 36(2):1–9. doi: [10.1007/S13593-016-0364-Z/FIGURES/3](https://doi.org/10.1007/S13593-016-0364-Z/FIGURES/3).
- Farr TG, Rosen PA, Caro E, Crippen R, Duren R, Hensley S, Kobrick M, Paller M, Rodriguez E, Roth L, et al. 2007. The shuttle radar topography mission. *Rev Geophys*. 45(2):2004. doi: [10.1029/2005RG000183](https://doi.org/10.1029/2005RG000183).
- Fearon J, Adraki PK, Boateng VF. 2015. 'Fertilizer subsidy programme in Ghana: evidence of performance after six years of implementation'. 5(21). Available at: [www.iiste.org](http://www.iiste.org). (Accessed: 8 March 2023).
- Fosu-Mensah BY, Manchadi A, Vlek PLG. 2019. Impacts of climate change and climate variability on maize yield under rainfed conditions in the sub-humid zone of Ghana: a scenario analysis using APSIM. *West Afr J Appl Ecol*. 27(1):108–126. doi: [10.4314/wajae.v27i1](https://doi.org/10.4314/wajae.v27i1).
- Genuer, R, Jean-Michel, P, Christine, TM, Variable selection using random forests (VSURF), CRAN Repos, 2022
- Gorelick N, Hancher M, Dixon M, Ilyushchenko S, Thau D, Moore R., 2017. Google Earth Engine: planetary-scale geospatial analysis for everyone. *Remote Sens Environ*. 202:18–27. doi: [10.1016/j.rse.2017.06.031](https://doi.org/10.1016/j.rse.2017.06.031).
- Greenwell B. 2022. Package 'pdp'- Partial Dependence Plots. Available at: <https://cran.r-project.org/web/packages/pdp/pdp.pdf>. (Accessed: 10 February 2023).
- Hengl T, Miller MAE, Krizán J, Shepherd KD, Sila A, Kilibarda M, Antonijević O, Glušica L, Dobermann A, Haefele SM, et al. 2021. African soil properties and nutrients mapped at 30 m spatial resolution using two-scale ensemble machine learning. *Sci Rep*. 11(1):1–18. doi: [10.1038/s41598-021-85639-y](https://doi.org/10.1038/s41598-021-85639-y).
- Jeong JH, Resop JP, Mueller ND, Fleisher DH, Yun K, Butler EE, Timlin DJ, Shim K-M, Gerber JS, Reddy VR, et al. 2016. Random forests for global and regional crop yield predictions. *PLoS One*. 11(6): e0156571. doi: [10.1371/JOURNAL.PONE.0156571](https://doi.org/10.1371/JOURNAL.PONE.0156571).
- Jin Z, Azzari G, Burke M, Aston S, Lobell D., 2017. Mapping smallholder yield heterogeneity at multiple scales in Eastern Africa. *Remote Sens*. 9(9):931. doi: [10.3390/rs9090931](https://doi.org/10.3390/rs9090931).
- Kabambe VH, Katunga LA, Kapewa T. 2008. Screening legumes for integrated management of witchweeds (*Alectra vogelii* and *Striga asiatica*) in Malawi. *Afr J Agric Res*. 3:708–715.
- Kanton RAL, Prasad PVV, Mohammed AM, Bidzakin JK, Ansoba EY, Asungre PA, Lamini S, Mahama G, Kusi F, Sugri I, et al. 2016. Organic and inorganic fertilizer effects on the growth and yield of maize in a dry agro-ecology in Northern Ghana. *J Crop Improve*. 30(1):1–16. doi: [10.1080/15427528.2015.1085939](https://doi.org/10.1080/15427528.2015.1085939).
- Khun M. 2022. Classification and regression training: package caret. Available at: <https://cran.r-project.org/web/packages/caret/caret.pdf>. (Accessed: 26 January 2023).
- Lambert M-J, Traoré PCS, Blaes X, Baret P, Defourny P. 2018. Estimating smallholder crops production at village level from Sentinel-2 time series in Mali's cotton belt. *Remote Sens Environ*. 216:647–657. doi: [10.1016/j.rse.2018.06.036](https://doi.org/10.1016/j.rse.2018.06.036).
- Li C, Chimimba EG, Kambombe O, Brown LA, Chibarabada TP, Lu Y, Anghileri D, Ngongondo C, Sheffield J, Dash J, et al. 2022. Maize yield estimation in intercropped smallholder fields using satellite data in Southern Malawi. *Remote Sens*. 14(10):2458. doi: [10.3390/rs14102458](https://doi.org/10.3390/rs14102458).
- Liu L, Basso B. 2017. Spatial evaluation of maize yield in Malawi. *Agric Syst*. 157:185–192. doi: [10.1016/j.agry.2017.07.014](https://doi.org/10.1016/j.agry.2017.07.014).
- Lobell DB, Azzari G, Burke M, Gourlay S, Jin Z, Kilic T, Murray S. 2020. Eyes in the sky, boots on the ground: assessing satellite- and ground-based approaches to crop yield measurement and analysis. *Am J Agric Econ*. 102(1):202–219. doi: [10.1093/ajae/aaz051](https://doi.org/10.1093/ajae/aaz051).
- Lohitha Reddy K, Siva Kumar AP. 2023. Machine learning techniques for weather based crop yield prediction. 2023 Third International Conference on Artificial Intelligence and Smart Energy (ICAIS). pp. 1263–1268. doi: [10.1109/ICAIS56108.2023.10073740](https://doi.org/10.1109/ICAIS56108.2023.10073740).
- Mapila MATJ, Njuki J, Delve RJ, Zingore S, Matibini J. 2012. Determinants of fertiliser use by smallholder maize farmers in the Chinyanja Triangle in Malawi, Mozambique and Zambia. *Agric Econ Res Policy Pract Southern Afr*. 51(1):21–41. doi: [10.1080/03031853.2012.649534](https://doi.org/10.1080/03031853.2012.649534).
- Marfo-Ahenkora E. 2020. *Strategies for sustainable productivity of maize (Zea mays L.) - based farming systems of smallholder farmers in Ghana*. University of Cape Coast. Available at: <http://ir.ucc.edu.gh/jspui/handle/123456789/7197>. (Accessed: 28 February 2023).



- Martey E, Etwire PM, Wossen T, Menkir A, Abdoulaye T. 2022. Impact assessment of Striga resistant maize varieties and fertilizer use in Ghana: a panel analysis. *Food Energy Secur.* 12(2):e432. doi: [10.1002/fes3.432](https://doi.org/10.1002/fes3.432).
- McCarthy N, Kilic T, Brubaker J, Murray S, de la Fuente A. 2021. Droughts and floods in Malawi: impacts on crop production and the performance of sustainable land management practices under weather extremes. *Environ Dev Econ.* 26(5-6):432–449. doi: [10.1017/S1355770X20000455](https://doi.org/10.1017/S1355770X20000455).
- Meng L, Liu H, Ustin SL, Zhang X. 2021. Predicting maize yield at the plot scale of different fertilizer systems by multi-source data and machine learning methods. *Remote Sens.* 13(18):3760. doi: [10.3390/rs13183760](https://doi.org/10.3390/rs13183760).
- Meyer H, Reudenbach C, Hengl T, Katurji M, Nauss T. 2018. Improving performance of spatio-temporal machine learning models using forward feature selection and target-oriented validation. *Environ Model Softw.* 101:1–9. doi: [10.1016/j.envsoft.2017.12.001](https://doi.org/10.1016/j.envsoft.2017.12.001).
- Meyer H, Reudenbach C, Willauer S, Nauss T. 2019. Importance of spatial predictor variable selection in machine learning applications – moving from data reproduction to spatial prediction. *Ecol Modell.* 411:108815. doi: [10.1016/j.ecolmodel.2019.108815](https://doi.org/10.1016/j.ecolmodel.2019.108815).
- Meyer H, Pebesma E. 2021. Predicting into unknown space? Estimating the area of applicability of spatial prediction models. *Methods Ecol Evol.* 12(9):1620–1633. doi: [10.1111/2041-210X.13650](https://doi.org/10.1111/2041-210X.13650).
- Msowoya K, Madani K, Davtalab R, Mirchi A, Lund JR. 2016. Climate change impacts on maize production in the warm heart of Africa. *Water Resour Manage.* 30(14):5299–5312. doi: [10.1007/S11269-016-1487-3/FIGURES/8](https://doi.org/10.1007/S11269-016-1487-3/FIGURES/8).
- Muthoni F. 2021. Machine learning model accurately predict maize grain yields in conservation agriculture systems in Southern Africa. 2021 9th International Conference on Agro-Geoinformatics, Agro-Geoinformatics 2021. doi: [10.1109/AGRO-GEOINFORMATICSS50104.2021.9530335](https://doi.org/10.1109/AGRO-GEOINFORMATICSS50104.2021.9530335).
- Nagoshi RN, Koffi D, Agboka K, Adjevi AKM, Meagher RL, Goergen G., 2021. The fall armyworm strain associated with most rice, millet, and pasture infestations in the Western Hemisphere is rare or absent in Ghana and Togo. *PLoS One.* 16(6):e0253528. doi: [10.1371/JOURNAL.PONE.0253528](https://doi.org/10.1371/JOURNAL.PONE.0253528).
- Ngcamu BS, Chari F. 2020. Drought influences on food insecurity in Africa: a systematic literature review. *IJERPH.* 17(16):5897. doi: [10.3390/ijerph17165897](https://doi.org/10.3390/ijerph17165897).
- Niassy S, Agbodzavu MK, Mudereri BT, Kamalongo D, Ligowe I, Hailu G, Kimathi E, Jere Z, Ochatum N, Pittchar J, et al. 2022. Performance of push-pull technology in low-fertility soils under conventional and conservation agriculture farming systems in Malawi. *Sustainability.* 14(4):2162. doi: [10.3390/su14042162](https://doi.org/10.3390/su14042162).
- Oluoch KO, De Groote H, Gitonga ZM, Jin Z, Davis KF. 2022. A suite of agronomic factors can offset the effects of climate variability on rainfed maize production in Kenya. *Sci Rep.* 12(1):1–8. doi: [10.1038/s41598-022-19286-2](https://doi.org/10.1038/s41598-022-19286-2).
- Parkes B, Sultan B, Ciaia P. 2018. The impact of future climate change and potential adaptation methods on Maize yields in West Africa. *Clim Change.* 151(2):205–217. doi: [10.1007/S10584-018-2290-3/METRICS](https://doi.org/10.1007/S10584-018-2290-3/METRICS).
- R Core, Team, R: A language and environment for statistical computing [Internet], 2020, <http://www.r-project.org/index.html> (Accessed: 21 August 2020).
- Ragasa C, Chapoto A. 2017. Moving in the right direction? The role of price subsidies in fertilizer use and maize productivity in Ghana. *Food Sec.* 9(2):329–353. doi: [10.1007/S12571-017-0661-7/METRICS](https://doi.org/10.1007/S12571-017-0661-7/METRICS).
- Sauer J, Tchale H. 2009. The economics of soil fertility management in Malawi. *Appl Econ Perspect Policy.* 31(3):535–560. doi: [10.1111/j.1467-9353.2009.01452.x](https://doi.org/10.1111/j.1467-9353.2009.01452.x).
- Scheiterle L, Häring V, Birner R, Bosch C. 2019. Soil, striga, or subsidies? Determinants of maize productivity in Northern Ghana. *Agric Econ.* 50(4):479–494. doi: [10.1111/agec.12504](https://doi.org/10.1111/agec.12504).
- Scheiterle L, Birner R. 2018. Assessment of Ghana's comparative advantage in maize production and the role of fertilizers. *Sustainability.* 10(11):4181. doi: [10.3390/su10114181](https://doi.org/10.3390/su10114181).
- Setsoafia ED, Ma W, Renwick A. 2022. Effects of sustainable agricultural practices on farm income and food security in Northern Ghana. *Agric Econ.* 10(1):1–15. doi: [10.1186/S40100-022-00216-9/TABLES/4](https://doi.org/10.1186/S40100-022-00216-9/TABLES/4).
- Shi W, Tao F. 2014. Vulnerability of African maize yield to climate change and variability during 1961–2010. *Food Sec.* 6(4):471–481. doi: [10.1007/S12571-014-0370-4/METRICS](https://doi.org/10.1007/S12571-014-0370-4/METRICS).
- Silberg TR, Richardson RB, Hockett M, Snapp SS. 2017. Sustainability maize-legume intercropping in central Malawi: determinants of practice. *Int J Agric.* 15(6):662–680. doi: [10.1080/14735903.2017.1375070](https://doi.org/10.1080/14735903.2017.1375070).
- Snapp S, et al. 2014. *Maize yield response to nitrogen in Malawi's smallholder production systems, MaSSP*. 9. Washington, DC. Available at: <http://ebrary.ifpri.org/cdm/ref/collection/p15738coll2/id/128436>. (Accessed: 20 February 2023).

- Srivastava AK, Mboh CM, Gaiser T, Ewert F. 2017. Impact of climatic variables on the spatial and temporal variability of crop yield and biomass gap in Sub-Saharan Africa- a case study in Central Ghana. *Field Crops Research*. 203:33–46. doi: [10.1016/j.fcr.2016.11.010](https://doi.org/10.1016/j.fcr.2016.11.010).
- Tamene L, Mponela P, Ndengu G, Kihara J. 2016. Assessment of maize yield gap and major determinant factors between smallholder farmers in the Dedza district of Malawi. *Nutr Cycl Agroecosyst*. 105(3): 291–308. doi: [10.1007/s10705-015-9692-7](https://doi.org/10.1007/s10705-015-9692-7).
- Tinonin C, et al. 2016. *Africa RISING Baseline Evaluation Survey (ARBES) report for Ghana*. International Food Policy Research Institute. Available at: <https://cgspace.cgiar.org/handle/10568/75528>. (Accessed: 8 March 2023).
- Tittonell P, Giller KE. 2013. When yield gaps are poverty traps: the paradigm of ecological intensification in African smallholder agriculture. *Field Crops Res*. 143:76–90. doi: [10.1016/j.fcr.2012.10.007](https://doi.org/10.1016/j.fcr.2012.10.007).
- Vergopolan N, Xiong S, Estes L, Wanders N, Chaney NW, Wood EF, Konar M, Caylor K, Beck HE, Gatti N, et al. 2021. Field-scale soil moisture bridges the spatial-scale gap between drought monitoring and agricultural yields. *Hydrol Earth Syst Sci*. 25(4):1827–1847. doi: [10.5194/hess-25-1827-2021](https://doi.org/10.5194/hess-25-1827-2021).
- Vuntade D, Mzuza MK, Vuntade D, Mzuza MK. 2022. Factors affecting adoption of Conservation Agriculture practices in Mpatsa extension planning area, Nsanje, Southern Malawi. *GEP*. 10(03):96–110. doi: [10.4236/gep.2022.103008](https://doi.org/10.4236/gep.2022.103008).
- Wang H, Snapp SS, Fisher M, Viens F. 2019. A Bayesian analysis of longitudinal farm surveys in Central Malawi reveals yield determinants and site-specific management strategies. *PLoS One*. 14(8):e0219296. doi: [10.1371/journal.pone.0219296](https://doi.org/10.1371/journal.pone.0219296).
- Warnatzsch EA, Reay DS, Camardo Leggieri M, Battilani P. 2020. Climate change impact on aflatoxin contamination risk in Malawi's maize crops. *Front Sustain Food Syst*. 4:238. doi: [10.3389/FSUFS.2020.591792/BIBTEX](https://doi.org/10.3389/FSUFS.2020.591792/BIBTEX).
- Warnatzsch EA, Reay DS. 2020. Assessing climate change projections and impacts on Central Malawi's maize yield: the risk of maladaptation. *Sci Total Environ*. 711:134845. doi: [10.1016/j.scitotenv.2019.134845](https://doi.org/10.1016/j.scitotenv.2019.134845).
- De Weerd J, Duchoslav J. 2022. *Are fertilizer subsidies in Malawi value for money?* doi: [10.2499/P15738COLL2.135960](https://doi.org/10.2499/P15738COLL2.135960).
- White S. 2019. *A TEEBAgriFood analysis of the Malawi maize agri-food system*. Available at: [https://futureoffood.org/wp-content/uploads/2021/01/GA\\_TEEB\\_MalawiMaize201903.pdf](https://futureoffood.org/wp-content/uploads/2021/01/GA_TEEB_MalawiMaize201903.pdf). (Accessed: 20 February 2023).
- Yeboah S, Ennin SA, Ibrahim A, Oteng-Darko P, Mutyambai D, Khan ZR, Mochiah MB, Ekesi S, Niassy S. 2021. Effect of spatial arrangement of push-pull companion plants on fall armyworm control and agronomic performance of two maize varieties in Ghana. *Crop Prot*. 145:105612. doi: [10.1016/j.cropro.2021.105612](https://doi.org/10.1016/j.cropro.2021.105612).
- Zhang L, Zhang Z, Luo Y, Cao J, Tao F. 2019. Combining optical, fluorescence, thermal satellite, and environmental data to predict county-level maize yield in China using machine learning approaches. *Remote Sens*. 12(1):21. doi: [10.3390/rs12010021](https://doi.org/10.3390/rs12010021).

## Appendix 1. Histograms showing the distribution of the continuous household and satellite-based across the different households in Ghana and Malawi



**Appendix 2. Scatter plots for the predicted versus observed maize yield for Northern Ghana and Malawi in 2013 and 2019 when using all predictor variables**

