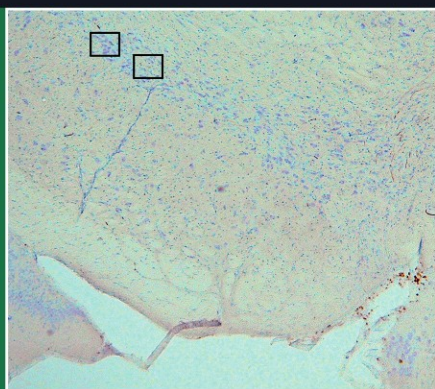


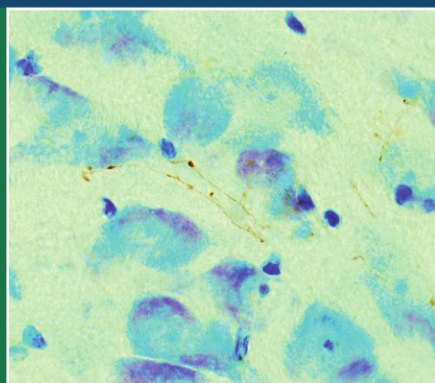
ADVANCES IN ANATOMY, EMBRYOLOGY AND CELL BIOLOGY

Enrico Marani
Tjitske Heida
Egbert A.J.F. Lakke
Kamen G. Usunoff



The Subthalamic Nucleus

Part I: Development, Cytology,
Topography and Connections



 Springer

Reviews and critical articles covering the entire field of normal anatomy (cytology, histology, cyto- and histochemistry, electron microscopy, macroscopy, experimental morphology and embryology and comparative anatomy) are published in *Advances in Anatomy, Embryology and Cell Biology*. Papers dealing with anthropology and clinical morphology that aim to encourage cooperation between anatomy and related disciplines will also be accepted. Papers are normally commissioned. Original papers and communications may be submitted and will be considered for publication provided they meet the requirements of a review article and thus fit into the scope of "Advances". English language is preferred.

It is a fundamental condition that submitted manuscripts have not been and will not simultaneously be submitted or published elsewhere. With the acceptance of a manuscript for publication, the publisher acquires full and exclusive copyright for all languages and countries.

Twenty-five copies of each paper are supplied free of charge.

Manuscripts should be addressed to

Prof. Dr. F. BECK, Howard Florey Institute, University of Melbourne, Parkville, 3000 Melbourne, Victoria, Australia
e-mail: fb22@le.ac.uk

Prof. Dr. F. CLASCÁ, Department of Anatomy, Histology and Neurobiology,
Universidad Autónoma de Madrid, Ave. Arzobispo Morcillo s/n, 28029 Madrid, Spain
e-mail: francisco.clasca@uam.es

Prof. Dr. M. FROTSCHER, Institut für Anatomie und Zellbiologie, Abteilung für Neuroanatomie,
Albert-Ludwigs-Universität Freiburg, Albertstr. 17, 79001 Freiburg, Germany
e-mail: michael.frotscher@anat.uni-freiburg.de

Prof. Dr. D.E. HAINES, Ph.D., Department of Anatomy, The University of Mississippi Med. Ctr.,
2500 North State Street, Jackson, MS 39216-4505, USA
e-mail: dhaines@anatomy.umsmed.edu

Prof. Dr. N. HIROKAWA, Department of Cell Biology and Anatomy, University of Tokyo,
Hongo 7-3-1, 113-0033 Tokyo, Japan
e-mail: hirokawa@m.u-tokyo.ac.jp

Dr. Z. KMIĘC, Department of Histology and Immunology, Medical University of Gdansk,
Debinki 1, 80-211 Gdansk, Poland
e-mail: zkmiec@amg.gda.pl

Prof. Dr. H.-W. KORF, Zentrum der Morphologie, Universität Frankfurt,
Theodor-Stern Kai 7, 60595 Frankfurt/Main, Germany
e-mail: korf@em.uni-frankfurt.de

Prof. Dr. E. MARANI, Department Biomedical Signal and Systems, University Twente,
P.O. Box 217, 7500 AE Enschede, The Netherlands
e-mail: e.marani@utwente.nl

Prof. Dr. R. PUTZ, Anatomische Anstalt der Universität München,
Lehrstuhl Anatomie I, Pettenkoferstr. 11, 80336 München, Germany
e-mail: reinhard.putz@med.uni-muenchen.de

Prof. Dr. Dr. h.c. Y. SANO, Department of Anatomy, Kyoto Prefectural University of Medicine,
Kawaramachi-Hirokoji, 602 Kyoto, Japan

Prof. Dr. Dr. h.c. T.H. SCHIEBLER, Anatomisches Institut der Universität,
Koellikerstraße 6, 97070 Würzburg, Germany

Prof. Dr. J.-P. TIMMERMANS, Department of Veterinary Sciences, University of Antwerpen,
Groenenborgerlaan 171, 2020 Antwerpen, Belgium
e-mail: jean-pierre.timmermans@ua.ac.be

198
**Advances in Anatomy,
Embryology
and Cell Biology**

Editors

**F. Beck, Melbourne · F. Clascá, Madrid
M. Frotscher, Freiburg · D.E. Haines, Jackson
N. Hirokawa, Tokyo · Z. Kmiec, Gdansk
H.-W. Korf, Frankfurt · E. Marani, Enschede
R. Putz, München · Y. Sano, Kyoto
T.H. Schiebler, Würzburg
J.-P. Timmermans, Antwerpen**

Enrico Marani, Tjitske Heida,
Egbert A.J.F. Lakke,
and Kamen G. Usunoff

**The Subthalamic
Nucleus
Part I: Development,
Cytology, Topography
and Connections**

With 29 Figures

 Springer

Enrico Marani
Tjitske Heida

Department of Biomedical Signals and Systems,
University of Twente,
7500 AE Enschede
The Netherlands

e-mail: e.marani@utwente.nl

e-mail: t.heida@el.utwente.nl

Egbert A.J.F. Lakke

Department of Neurosurgery,
Leiden University Medical Centre,
2300 RC Leiden
The Netherlands

Kamen G. Usunoff

Department of Anatomy & Histology,
Medical University Sofia,
1431 Sofia
Bulgaria

e-mail: uzunoff@medfac.acad.bg

ISSN 0301-5556

ISBN 978-3-540-79459-2

e-ISBN 978-3-540-79460-8

Library of Congress Control Number: 2008927199

© 2008 Springer-Verlag Berlin Heidelberg

This work is subject to copyright. All rights are reserved, whether the whole or part of the material is concerned, specifically the rights of translation, reprinting, reuse of illustrations, recitation, broadcasting reproduction on microfilm or in any other way, and storage in data banks. Duplication of this publication or parts thereof is permitted only under the provisions of the German Copyright Law of September 9, 1965, in its current version, and permission for use must always be obtained from Springer-Verlag. Violations are liable to prosecution under the German Copyright Law.

The use of general descriptive names, registered names, trademarks, etc. in this publication does not imply, even in the absence of a specific statement, that such names are exempt from the relevant protective laws and regulations and therefore free for general use.

Product liability: The publisher cannot guarantee the accuracy of any information about dosage and application contained in this book. In every individual case the user must check such information by consulting the relevant literature.

Printed on acid-free paper

9 8 7 6 5 4 3 2 1

springer.com

List of Contents

1	Introduction	1
1.1	Hemiballism	1
1.2	Early Subthalamic Research	2
1.3	Ballism and the Subthalamic Nucleus.	4
2	Cytology of the Subthalamic Nucleus	6
2.1	Neuronal Types Present in the Subthalamic Nucleus	8
2.2	Ultrastructural Features of Subthalamic Nucleus Terminal Boutons	11
2.2.1	Flat Type 1 Boutons	11
2.2.2	Flat Type 2 Boutons	11
2.2.3	Small Round Boutons	12
2.2.4	Large Round Type 1 Boutons	13
2.2.5	Large Round Type 2 Boutons	13
2.2.6	Dense Core Vesicle Terminals	14
2.2.6.1	The Vesicle-Containing Dendrites of the Interneurons in the Subthalamic Nucleus	15
2.3	Cytochemistry of the Subthalamic Nucleus.	16
2.3.1	Nitric Oxide	17
2.3.2	Glial Fibrillary Acidic Protein	17
2.3.3	Ca ²⁺ Binding Proteins	17
2.3.4	Receptors in the Subthalamic Nucleus	18
2.3.4.1	Dopamine Receptors	18
2.3.4.2	Cannabinoid Receptors	19
2.3.4.3	Opioid Receptors	19
2.3.4.4	Glutamate Receptors	20
2.3.4.5	GABA Receptors	21
2.3.4.6	Serotonin Receptors	22
2.3.4.7	Cholinergic Receptors	22
2.3.5	Ca ²⁺ Channels	23
2.3.6	Purinergic Modulation	24
3	Ontogeny of the Subthalamic Nucleus	24
3.1	Development of the Subthalamic Cell Cord	24
3.2	Early Development of Subthalamic Connections	29
4	Topography of the Rat, Cat, Baboon and Human Subthalamic Nucleus	30
4.1	The Rat Subthalamic Nucleus: Cytoarchitecture	30
4.2	The Cat Subthalamic Nuclear Area: Sagittal Topographic Borders	32

4.3	The Baboon Subthalamic Area: Nuclei and Tracts	34
4.4	The Human Subthalamic Nucleus: Topography	40
4.4.1	Nissl Sections	40
4.4.2	Myelin-Stained Sections	47
4.5	Ageing of the Human STN	47
5	Connections of the Subthalamic Nucleus	48
5.1	Overview of the Mature Connections	48
5.2	Afferent and Efferent Human Connections	50
5.2.1	Cortical Connections	50
5.2.2	Mirrored Somatotopy in the Subthalamic Nucleus	56
5.2.3	Subthalamo-Cortical Connections	57
5.2.4	The Pallido-Subthalamic Connection	58
5.2.5	The Pedunculopontine-Subthalamic Interconnections	67
5.2.6	Pedunculopontine Connections in Man	70
5.3	Raphe Connections to Subthalamic Nucleus	73
5.4	The Thalamo-Subthalamic Connections	74
5.5	The Subthalamic-Central Grey Connections	74
5.6	The Colliculus Superior Connections	75
5.7	The Nigro-Subthalamic Connections	75
6	Nigro-Subthalamic Connections in the Rat	76
6.1	Introduction	76
6.2	Materials and Methods	76
6.2.1	Injections	76
6.2.2	Tracer Histochemistry	77
6.3	Results	77
6.3.1	Tracing Results	77
6.3.1.1	Appearance of Labelling	77
6.3.1.2	Course and Termination of Nigrosubthalamic Connections	78
6.3.2	Injections into the SNl	82
6.3.3	Injections into the SNr	82
6.3.4	Injections into the SNc	83
6.3.5	Control Injections	83
6.4	Discussion	85
7	Appendix 1	87
7.1	Description of the Human Pathology Cases Used in this Study	87
8	Appendix 2	88
8.1	Häggqvist and/or Nauta-Gygax Staining	88
8.2	Häggqvist and Klüver-Barrera Staining	89
8.3	Interpretation of the Staining	89
	References	90
	Index	115

Abstract

This monograph (Part I of two volumes) on the subthalamic nucleus (STN) accentuates the gap between experimental animal and human information concerning subthalamic development, cytology, topography and connections. The light and electron microscopical cytology focuses on the open nucleus concept and the neuronal types present in the STN. The cytochemistry encompasses enzymes, NO, glial fibrillary acidic protein (GFAP), calcium binding proteins, and receptors (dopamine, cannabinoid, opioid, glutamate, γ -aminobutyric acid (GABA), serotonin, cholinergic, and calcium channels). The ontogeny of the subthalamic cell cord is also reviewed. The topography concerns the rat, cat, baboon and human STN. The descriptions of the connections are also given from a historical point of view. Recent tracer studies on the rat nigro-subthalamic connection revealed contralateral projections. Part II of the two volumes (volume 199) on the subthalamic nucleus (STN) starts with a systemic model of the basal ganglia to evaluate the position of the STN in the direct, indirect and hyperdirect pathways. A summary of in vitro studies is given, describing STN spontaneous activity as well as responses to depolarizing and hyperpolarizing inputs and high-frequency stimulation. STN bursting activity and the underlying ionic mechanisms are investigated. Deep brain stimulation used for symptomatic treatment of Parkinson's disease is discussed in terms of the elements that are influenced and its hypothesized mechanisms. This part of the monograph explores the pedunclopontine–subthalamic connections and summarizes attempts to mimic neurotransmitter actions of the pedunclopontine nucleus in cell cultures and high-frequency stimulation on cultured dissociated rat subthalamic neurons. STN cell models – single- and multi-compartment models and system-level models are discussed in relation to subthalamic function and dysfunction. Parts I and II are compared.