

ReFlow

Statistics on Internet Traffic

Goal

- Create an online repository containing statistics about Internet traffic, which will serve as a reference to network operators and the research community.

ReFlow operation

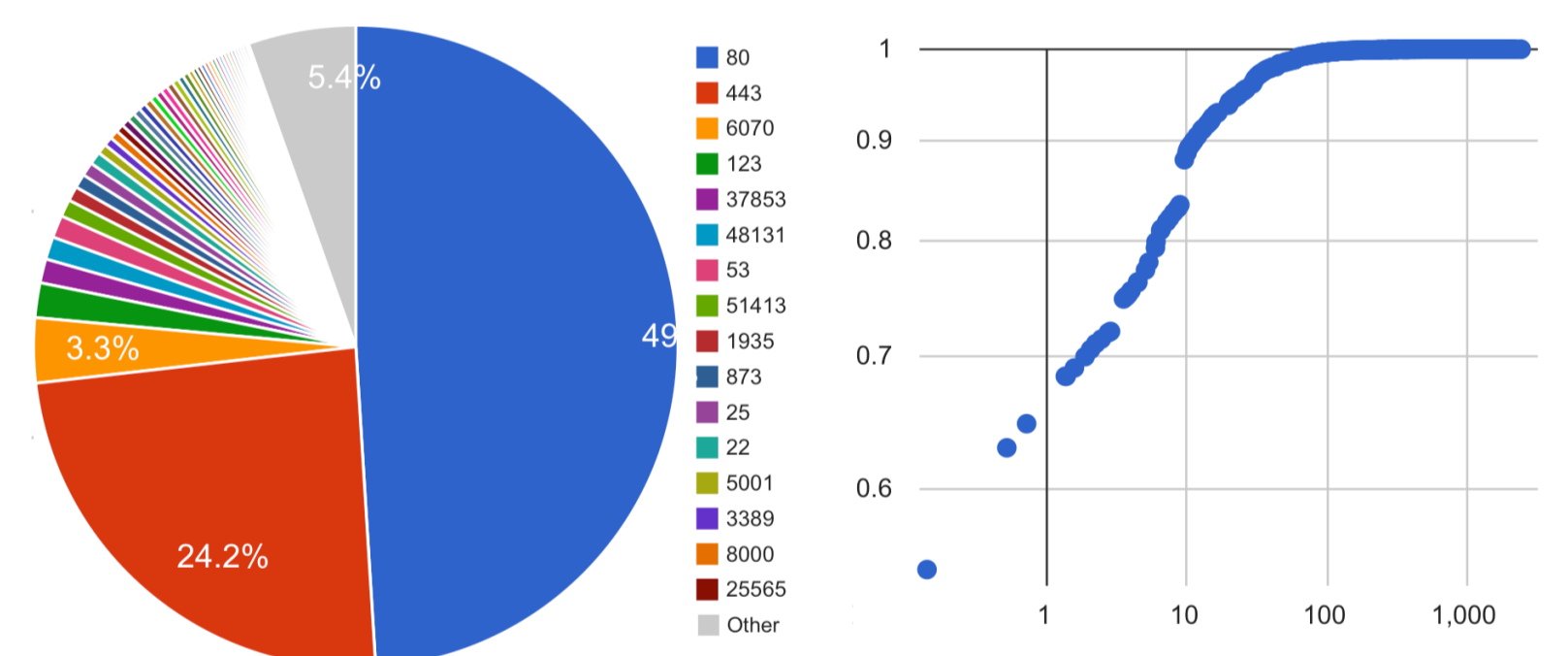
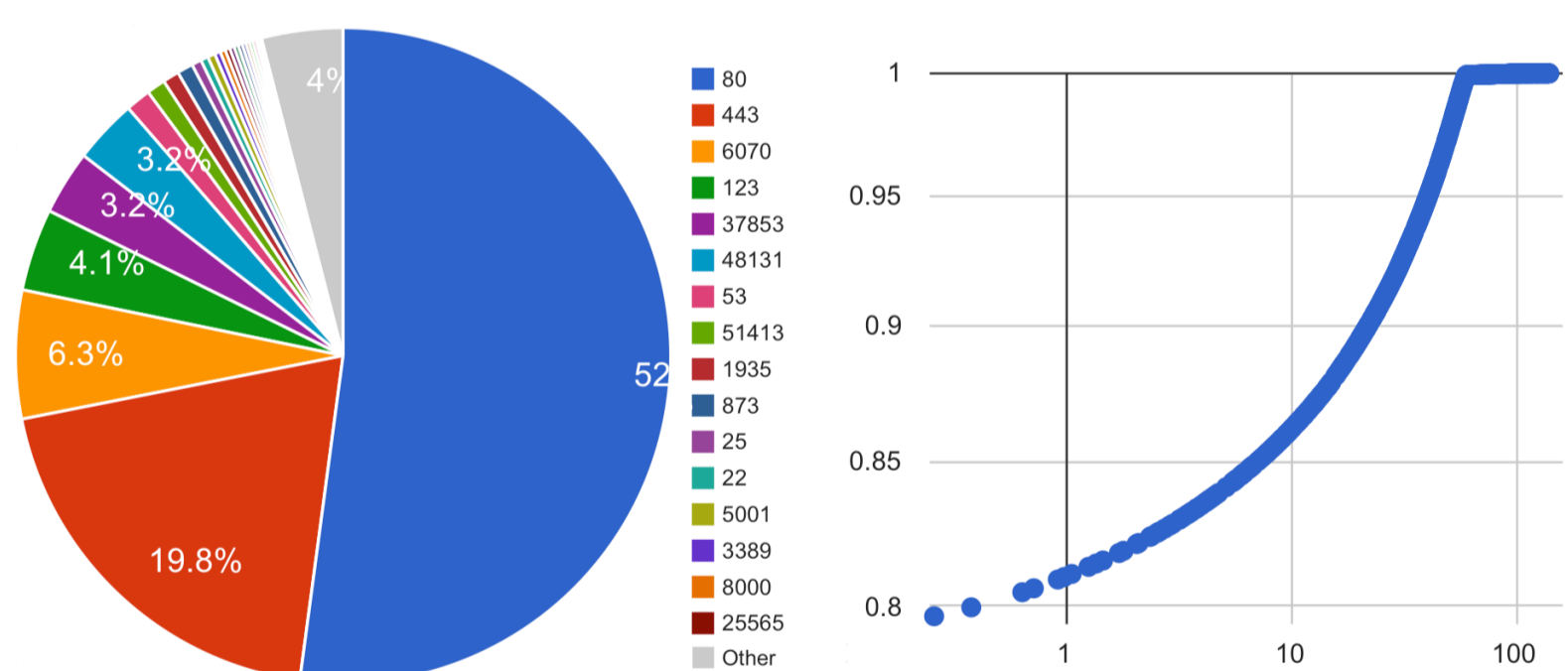
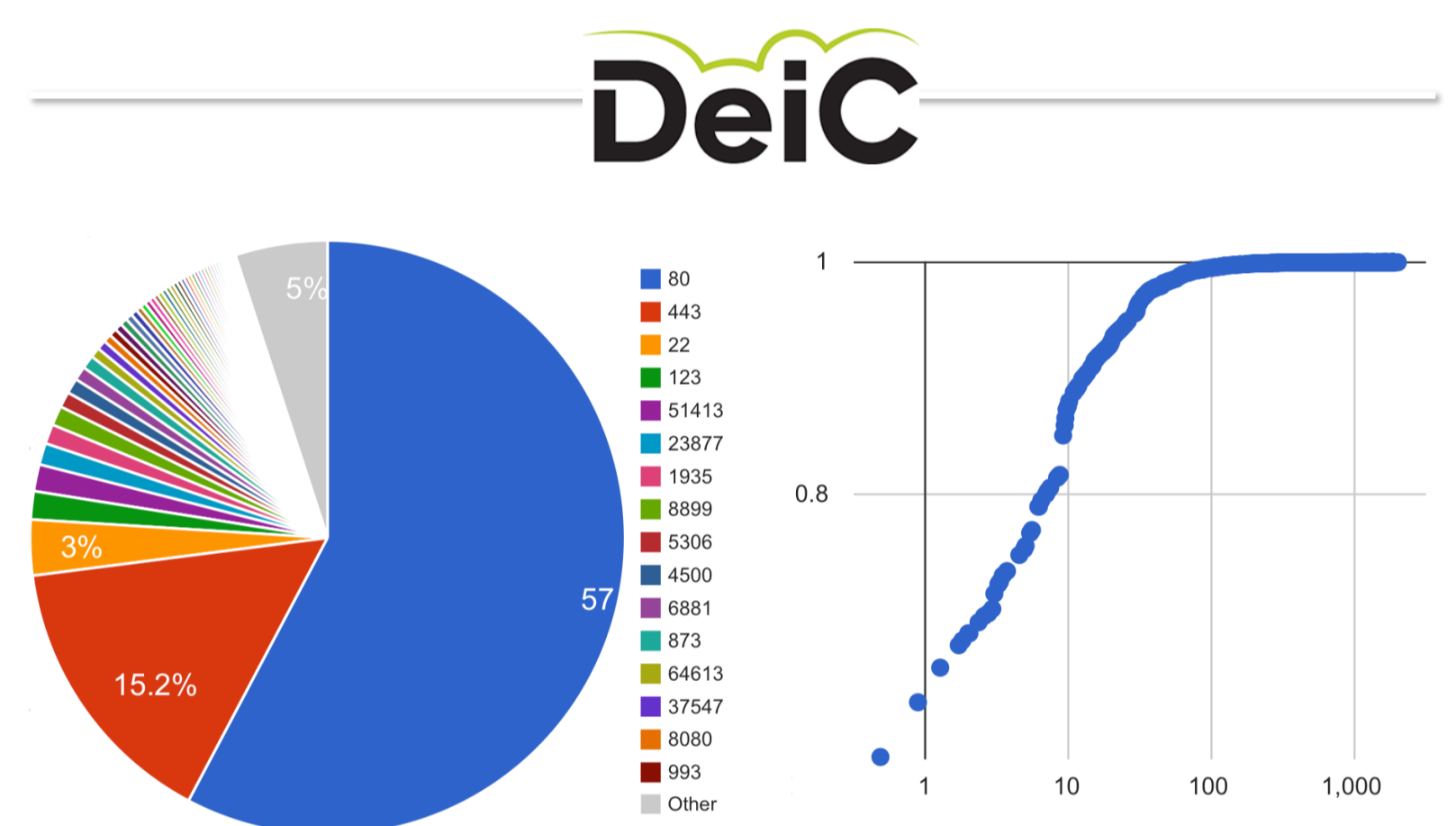
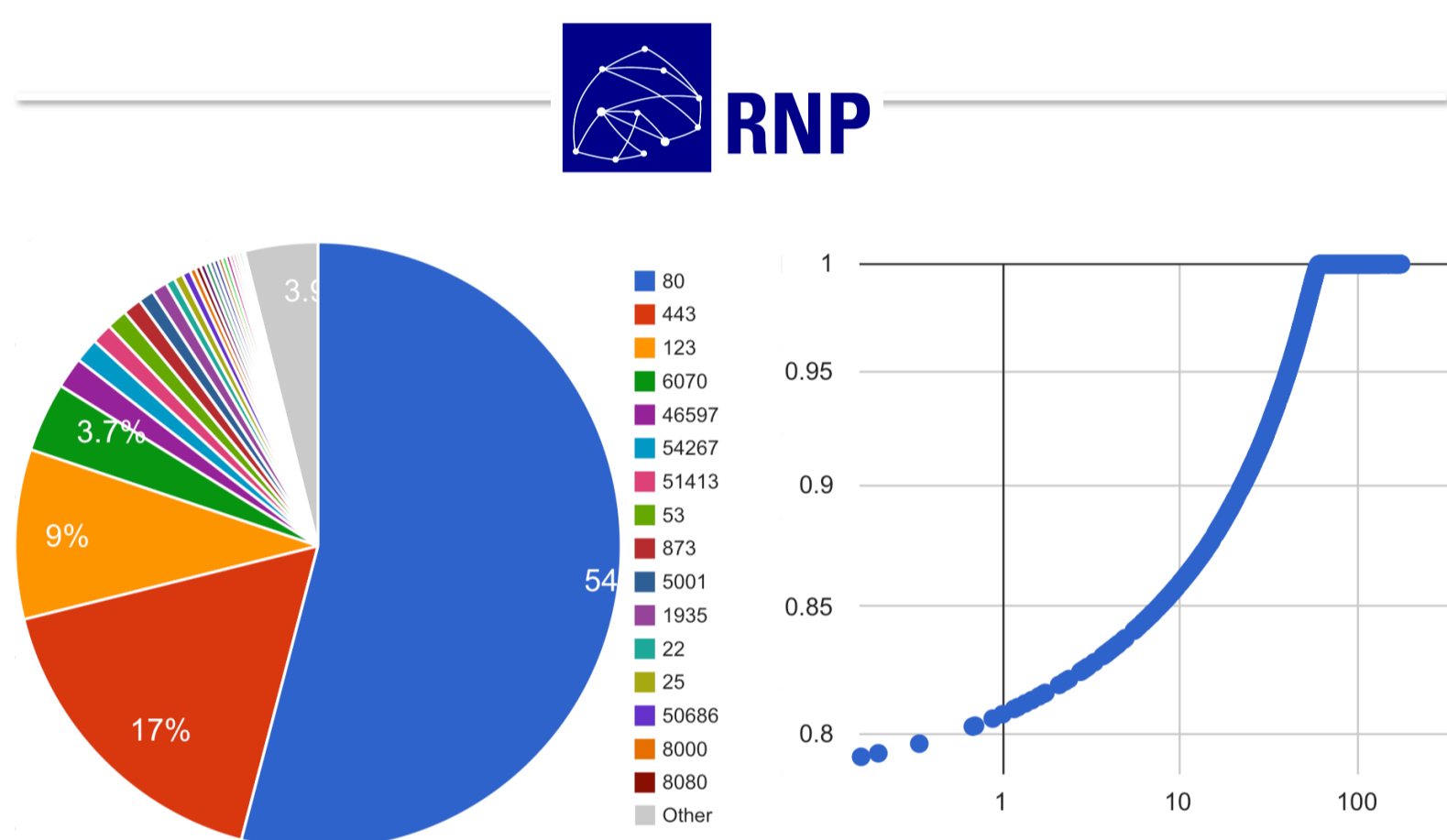
- The tool processes NetFlow-like traffic measurements and computes traffic statistics that later are presented in a public website.



stats.simpleweb.org

Present

- Currently, we are populating the repository with statistics of traffic from locations in Europe and South America. We have a fully operational system, running at our side and remote scripts at collaborators.



Future

- We aim at gathering data from other sources to become as representative as possible of general Internet traffic.
- Create an interface for more flexible querying of statistics, allowing for the comparison of data between various sources and weeks.

Do you have data? Contact us!

- Do you have NetFlow measurements or similar?
- Data can be processed at either our side or yours.
- We **do not** use or disclose sensitive data.

