

Acta Cryst. (1992). **C48**, 1884–1886

***N,N*-Diethyl-6-(hydroxyimino)- α -methyl-1-cyclohexene-1-acetamide**

BY PETER J. S. S. VAN EIJK, WILLEM VERBOOM AND DAVID N. REINHOUDT

Laboratory of Organic Chemistry, University of Twente, POB 217, 7500 AE Enschede, The Netherlands

AND SYBOLT HARKEMA*

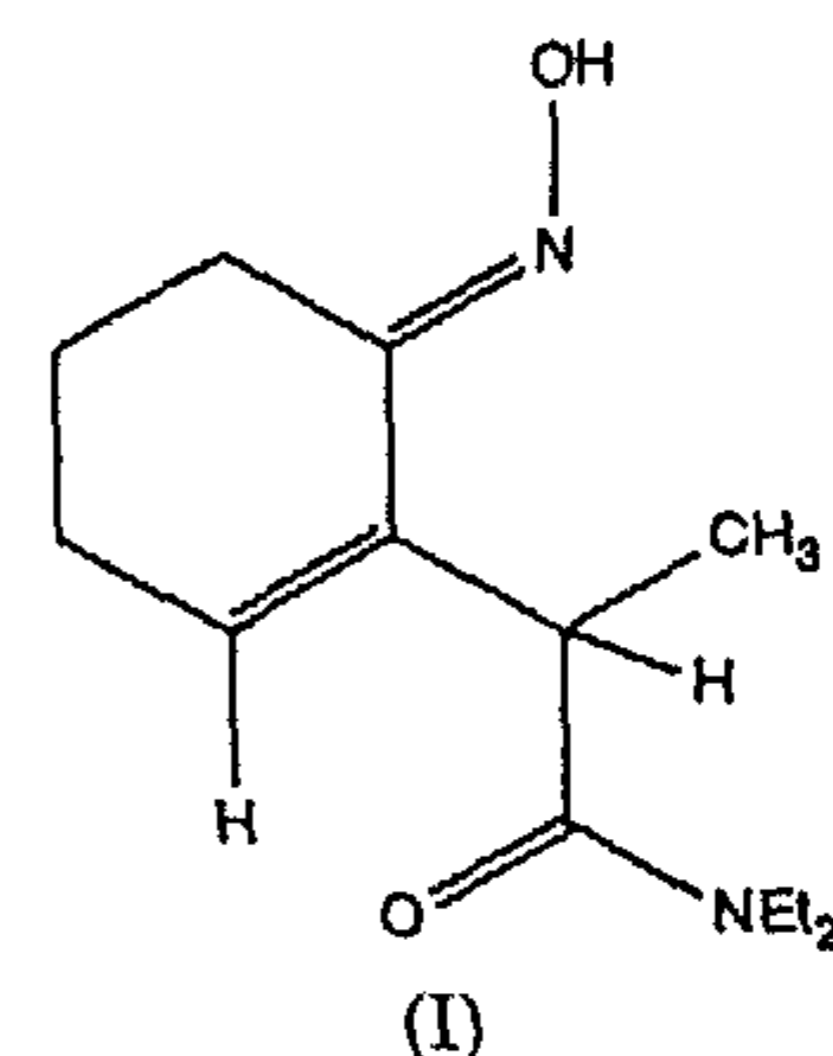
Laboratory of Chemical Physics, University of Twente, POB 217, 7500 AE Enschede, The Netherlands

(Received 4 November 1991; accepted 5 February 1992)

Abstract. $C_{13}H_{22}N_2O_2$, $M_r = 238.3$, monoclinic, $P2_1/c$, $a = 6.228$ (3), $b = 20.315$ (8), $c = 11.104$ (6) Å, $\beta = 103.87$ (5)°, $V = 1364$ (2) Å³, $Z = 4$, $D_x = 1.16$ g cm⁻³, $\lambda(\text{Mo } K\alpha) = 0.7107$ Å, $\mu = 0.73$ cm⁻¹, $F(000) = 520$, $T = 293$ K, final $R = 0.059$ for 1524 observed reflections. In the crystal structure disorder was found for one of the cyclohexene C atoms and in one of the ethyl groups. Molecules are connected by O—H...O hydrogen bonds.

Experimental. The title compound (I) was prepared by the reaction of the cyclic nitron *N,N*-diethyl-8-methyl-7-azabicyclo[4.2.0]oct-6-ene-8-carboxamide

7-oxide with potassium *tert*-butoxide (van Eijk, Reinhoudt, Harkema & van Hummel, 1986) in THF under reflux. The crystal structure was solved to determine the conformation of the reaction product.



* To whom correspondence should be addressed.

0108-2701/92/101884-03\$06.00

© 1992 International Union of Crystallography

Table 1. Fractional atomic coordinates and equivalent isotropic thermal parameters (\AA^2)
$$B_{\text{eq}} = (8\pi^2/3)\sum_i \sum_j U_{ij} a_i^* a_j^* a_i a_j$$

	x	y	z	B_{eq}
O1	0.7841 (3)	0.1084 (1)	0.7122 (2)	6.56 (5)
N2	0.6532 (3)	0.1057 (1)	0.7993 (2)	5.09 (5)
C3	0.4922 (4)	0.0649 (1)	0.7663 (2)	4.92 (6)
C4	0.4515 (5)	0.0238 (2)	0.6521 (3)	6.93 (8)
C5A	0.333 (1)	-0.0408 (4)	0.6612 (7)	6.4 (2)
C5B	0.2374 (9)	-0.0075 (3)	0.6232 (5)	7.6 (1)
C6	0.1513 (6)	-0.0347 (2)	0.7212 (3)	7.78 (9)
C7	0.1909 (5)	0.0116 (2)	0.8292 (3)	6.48 (7)
C8	0.3422 (4)	0.0583 (1)	0.8500 (2)	4.76 (6)
C9	0.3703 (4)	0.1068 (1)	0.9565 (2)	4.89 (6)
C10	0.2283 (5)	0.0906 (2)	1.0468 (3)	6.51 (7)
C11	0.3074 (4)	0.1754 (1)	0.9075 (2)	4.86 (5)
O12	0.1406 (3)	0.18380 (9)	0.8241 (2)	6.03 (5)
N13	0.4236 (4)	0.2273 (1)	0.9620 (3)	7.42 (7)
C14	0.3464 (7)	0.2942 (2)	0.9177 (5)	10.8 (1)
C15	0.205 (1)	0.3218 (3)	0.9804 (7)	17.8 (3)
C16A	0.659 (1)	0.2235 (3)	1.0310 (8)	8.8 (2)
C16B	0.585 (1)	0.2230 (4)	1.0881 (8)	9.4 (2)
C17A	0.679 (1)	0.2207 (4)	1.1692 (7)	10.3 (2)
C17B	0.802 (1)	0.2313 (5)	1.065 (1)	12.8 (3)

Table 2. Bond distances (\AA) and angles ($^\circ$)

O1—N2	1.407 (3)	C9—C10	1.523 (4)
N2—C3	1.286 (3)	C9—C11	1.511 (4)
C3—C4	1.488 (4)	C11—O12	1.227 (3)
C3—C8	1.473 (4)	C11—N13	1.339 (3)
C4—C5A	1.522 (8)	N13—C14	1.485 (4)
C4—C5B	1.442 (7)	C14—C15	1.37 (1)
C5A—C6	1.449 (9)	N13—C16A	1.482 (6)
C5B—C6	1.435 (7)	N13—C16B	1.519 (8)
C6—C7	1.498 (5)	C16A—C17A	1.52 (1)
C7—C8	1.319 (4)	C16B—C17B	1.44 (1)
C8—C9	1.517 (4)		
O1—N2—C3	111.7 (3)	C8—C9—C10	113.3 (2)
N2—C3—C4	124.5 (3)	C8—C9—C11	110.3 (3)
N2—C3—C8	116.6 (2)	C10—C9—C11	107.2 (2)
C4—C3—C8	118.9 (2)	O12—C11—N13	119.9 (2)
C3—C4—C5A	114.3 (4)	O12—C11—C9	120.0 (2)
C3—C4—C5B	113.4 (3)	N13—C11—C9	119.8 (3)
C4—C5A—C6	113.7 (5)	C11—N13—C14	118.3 (3)
C4—C5B—C6	119.8 (4)	C11—N13—C16A	123.5 (3)
C5A—C6—C7	115.2 (4)	C11—N13—C16B	122.6 (4)
C5B—C6—C7	110.2 (3)	C14—N13—C16A	114.9 (4)
C6—C7—C8	124.5 (3)	C14—N13—C16B	116.7 (4)
C3—C8—C7	119.3 (3)	N13—C14—C15	113.8 (5)
C3—C8—C9	117.5 (3)	N13—C16A—C17A	111.0 (7)
C7—C8—C9	123.2 (3)	N13—C16B—C17B	105.8 (7)

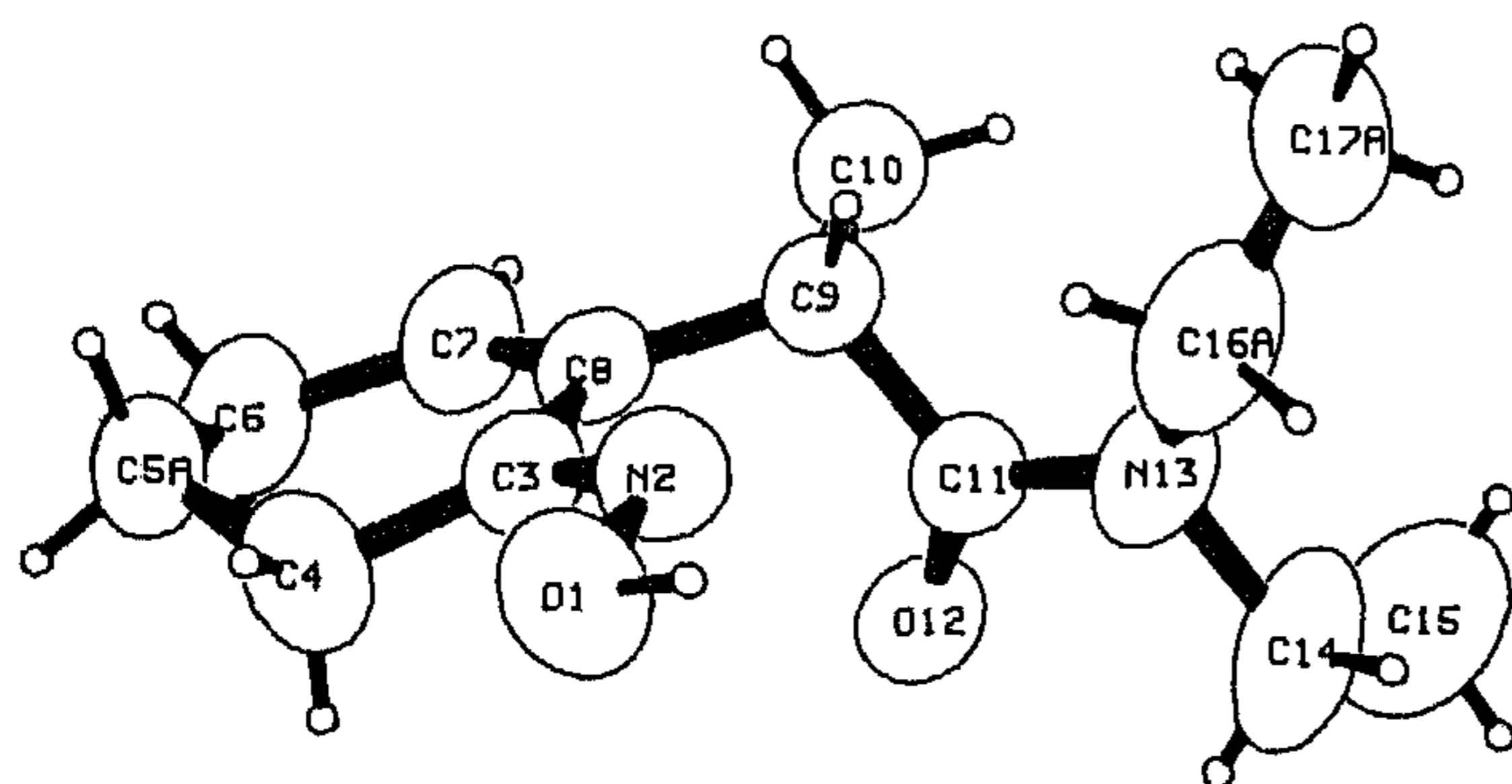


Fig. 1. View of the molecule with the atom-numbering scheme.

Reflections were measured at 293 K on an Enraf-Nonius CAD-4 diffractometer, using graphite-monochromated Mo $K\alpha$ radiation. Lattice parameters were determined by least squares from repeated measurements of 25 reflections with $6 < \theta < 13^\circ$. A total of 2401 independent reflections were collected up to $\theta = 25^\circ$ ($-7 \leq h \leq 7$, $0 \leq k \leq 24$, $0 \leq l \leq 13$) in the $\omega/2\theta$ scan mode {scan width (θ) [$1.0 + 0.34 \tan(\theta)^\circ$, scan speed $0.06^\circ \text{ s}^{-1}$]; 1524 reflections were considered observed [$F_o^2 > 3\sigma(F_o^2)$]. 124 pairs of $hk0$ reflections averaged with $R_{\text{int}} = 0.8\%$. The intensities of three standard reflections, measured every hour, showed no significant decrease. No absorption correction was applied.

The structure was solved with *MULTAN* (Germain, Main & Woolfson, 1971) and refined with full-matrix least squares. Weights for each reflection in the refinement (on F) were calculated from $w = 4F_o^2/\sigma^2(F^2)$, $\sigma^2(I) + (pF_o^2)^2$; the value of the instability factor p was determined as 0.05.

In the course of refinement disorder was found in one of the C atoms of the cyclohexene ring (C5) and in one of the ethyl groups (C16 and C17). The atoms were refined in two positions with partial occupancies of 0.40/0.60 and 0.50/0.50, respectively. H atoms were placed in calculated positions (bond distance 0.95 \AA) and treated as riding atoms. The H atom connected to O1 was found from a difference Fourier synthesis. The number of parameters refined was 186 {scale factor, isotropic extinction factor [final value $7(5) \times 10^{-7}$], positional parameters and anisotropic thermal parameters for the heavy atoms and positional and isotropic thermal parameters for H1}. Refinement converged at $R = 5.9\%$, $wR = 8.7\%$, $(\Delta/\sigma)_{\text{max}} = 0.02$. The largest peak on the final difference Fourier map was 0.34 e \AA^{-3} . All calculations were performed using *SDP* (B. A. Frenz & Associates, Inc., 1983). Atomic scattering factors were taken from *International Tables for X-ray Crystallography* (1974, Vol. IV, pp. 72–98). Atomic parameters of the non-H atoms are collected in Table 1.* Bond distances and angles are given in Table 2. Atom numbering is shown in Fig. 1. H1 is involved in an intermolecular hydrogen bond to O12 [O1...O12 distance $2.738(3) \text{ \AA}$, O1—H1...O12 angle $173(3)^\circ$].

Related literature. The preparation of the cyclic nitron precursor has been described by Pennings &

* Lists of structure factors, anisotropic thermal parameters, H-atom parameters and bond lengths and angles involving H atoms have been deposited with the British Library Document Supply Centre as Supplementary Publication No. SUP 55152 (21 pp.). Copies may be obtained through The Technical Editor, International Union of Crystallography, 5 Abbey Square, Chester CH1 2HU, England. [CIF reference: HU0411]

Reinhoudt (1982). The reactions and crystal structures of related non-cyclic oximes have been reported by van Eijk, Reinhoudt, Harkema & Visser (1986) and by van Eijk, Reinhoudt, Harkema & van Hummel (1986).

References

- B. A. FRENZ & ASSOCIATES, INC. (1983). *Enraf-Nonius SDP Structure Determination Package*. College Station, Texas, USA, and Enraf-Nonius, Delft, The Netherlands.
- EIJK, P. J. S. S. VAN, REINHOUDT, D. N., HARKEMA, S. & VAN HUMMEL, G. J. (1986). *Bio-Organic Heterocycles 1986 - Synthesis, Mechanisms and Bioactivity*. In *Proceedings of the 4th FECHM Conference on Heterocycles in Bio-Organic Chemistry* (Houthalen, Belgium, 25-28 May 1986), edited by H. C. VAN DER PLAS, M. SIMONYI, F. C. ALDERWEIRELDT & J. A. LEPOIVRE. Amsterdam: Elsevier.
- EIJK, P. J. S. S. VAN, REINHOUDT, D. N., HARKEMA, S. & VISSER, R. (1986). *Recl Trav. Chim. Pays-Bas*, **105**, 103-110.
- GERMAIN, G., MAIN, P. & WOOLFSON, M. M. (1971). *Acta Cryst.* **A27**, 368-376.
- PENNINGS, M. L. M. & REINHOUDT, D. N. (1982). *J. Org. Chem.* **47**, 1816-1823.

Acta Cryst. (1992). **C48**, 1886-1887